

Oncology Referral Directory

Chelmsford



About

Diagnosics

Breast
Consultants

Urology
Consultants

National
services

Neuro-
oncology

A - Z
Consultants

GenesisCare
in Chelmsford

Improving life outcomes

Welcome to our specialist independent **outpatient oncology centre** offering a nationally recognised service for patients needing access to the **latest medical oncology** and **radiation oncology** treatments.

We work with local and regional oncologists and surgeons in conjunction with partner hospitals to deliver **rapid access pathways** for all cancers.

Chelmsford

Springfield Cancer Centre
Lawn Lane
Chelmsford
CM1 7GU
01245 987 901



[Access our rapid access pathways](#)

[Search local surgeons and oncologists](#)

[Learn about our latest cancer treatments](#)



Outpatient oncology

Chelmsford

Tel: 0808 301 9889

enquiries@genesiscare.co.uk



About

Diagnostics

Breast
Consultants

Urology
Consultants

National
services

Neuro-
oncology

A - Z
Consultants

Specialist outpatient oncology centres

Our 14 specialist independent outpatient oncology centres offer a nationally recognised premium service for patients needing access to **the latest medical oncology and radiation oncology treatments**.

We are part of a global organisation promoting a model of care offering new innovation and evidence-based cancer treatments.

Our oncology outpatient centres are equipped with **advanced radiotherapy** technologies, together with chemotherapy, nursing, personalised wellbeing care and cancer diagnostics at selected centres. These include **one stop breast** clinics and **rapid access urology**, haematology and head and neck services.

We treat all adult cancers, including breast and prostate, as well as less common cancers and palliative patients.

We work closely with leading local and regional oncologists and surgeons to provide complete **rapid access pathways** – with five days from plan to treatment. We also have pathways in place at all of our centres for acute admissions if needed.

We provide an eMDT platform to facilitate easy and secure communication and data access between healthcare teams and experts across the GenesisCare global organisation.

We are recognised by all insurers and self-pay options are available.

Our mission is to ensure patients achieve the best life outcomes possible following a cancer diagnosis

- 1 Nottingham
- 2 Birmingham
- 3 Cambridge
- 4 Milton Keynes
- 5 Oxford
- 6 Elstree
- 7 Chelmsford
- 8 Bristol
- 9 Windsor
- 10 London
- 11 Guildford
- 12 Maidstone
- 13 Southampton
- 14 Portsmouth



When required, we will help your patients with transport depending on treatment and location. Please enquire for more details.

How to refer

Patients can be referred directly for diagnostics or to one of the surgeons or oncologists listed in this directory. The surgeons consult at private hospitals in your area and have established referral pathways to oncologists who work closely with us.

Search our surgeons
and oncologists



About us

Chelmsford

Tel: 0808 301 9889

enquiries@genesiscare.co.uk

 GenesisCare

About

Diagnostics

Breast
Consultants

Urology
Consultants

National
services

Neuro-
oncology

A - Z
Consultants

Cancers treated

- Benign
- Bone and soft tissue
- Breast
- Colorectal
- Gastric
- Gynaecological
- Haematological
- Head and neck
- Hepatobiliary
- Lung
- Neurological
- Palliative
- Pancreatic
- Prostate
- Skin
- Urological

Our **rapid access pathways** are comprehensive, covering all modalities and including acute admission pathways. We **ensure five days from plan to treatment** for radical care, **two days from plan to treatment** for palliative care and **urgent same-day care** is available on request.



We have rapid access pathways as standard



Rapid access pathways

- Diagnostics – **from 24 hours**
- Chemotherapy – **from five days**
- Radiotherapy
 - Urgent – **same day**
 - Palliative – **two days from plan**
 - Radical – **five days from plan**

Treatment within five days from planning scan
Better care faster

Search our surgeons
and oncologists



Cancer pathways

Chelmsford

Tel: 0808 301 9889

enquiries@genesiscare.co.uk

 GenesisCare

About

Diagnostics

Breast
Consultants

Urology
Consultants

National
services

Neuro-
oncology

A - Z
Consultants

			CT	MRI	PET/CT	Advanced radiotherapy - VMAT, SGRT	Advanced radiotherapy - SABR	Advanced radiotherapy - SRS	Advanced radiotherapy - VMAT	Rectal spacer	Chemotherapy	Nuclear medicine - Mridian	Exercise medicine	Theranostics
Birmingham	T 01213 533 055 F 01213 533 792	Little Aston Hall Drive, Sutton Coldfield, B74 3BF	●	●	●	●				●	●		●	
Bristol	T 01454 456 500 F 01454 456 502	300 Park Avenue, Aztec West, Bristol, BS32 4SY	●	●	●	●				●	●	●	●	●
Cambridge	T 01223 907 600 F 01638 662 134	The Oaks, Fordham Road, Newmarket, CB8 7XN	●	●	●	●				●	●	●	●	●
Chelmsford	T 01245 987 901 F 01245 461 071	Springfield Cancer Centre, Lawn Lane, CM1 7GU	●	●	●	●				●	●	●	●	●
Elstree	T 02082 369 040 F 02082 369 041	Unit 710, Centennial Park Borehamwood, WD6 3SZ	●	●	●	●				●	●	●	●	●
Guildford	T 01483 806 000 F 01483 563 597	BMI Oncology Centre, 46 Harvey Road, GU1 3LX	●	●	●	●				●	●			●
London	T 02038 480 900	Cromwell Hospital, 164-178 Cromwell Rd, SW5 0TU	●	●	●	●	GK	●	●	●	●	LO LP	●	●
Maidstone	T 01732 207 000 F 01732 841 333	17 Kings Hill Avenue, West Malling, ME19 4UA	●	●	●	●				●	●	●	●	●
Milton Keynes	T 01908 467 700 F 01908 238 415	Sunrise Parkway, Linford Wood East, MK14 6LS	●	●	●	●				●	●	●	●	●
Nottingham	T 01158 077 400 F 01159 200 760	Sherwood Lodge Drive, Nottingham, NG5 8RX	●	●	●	●				●	●			●
Oxford	T 01865 237 700 F 01865 770 016	Peter's Way, Sandy Lane West, OX4 6LB	●	●	●	●	●	●	●	●	●	LO		●
Portsmouth	T 02392 484 992 F 02392 471 966	Bartons Road, Havant, PO9 5NA	●	●	●	●				●	●			●
Southampton	T 02381 277 900 F 02380 764 962	Spire Hospital, Chalybeate Close, SO16 6UY	●	●	●	●				●	●			●
Windsor	T 01753 418 444 F 01753 864 036	69 Alma Road, Windsor, SL4 3HD	●	●	●	●				●	●	LO LP	●	●

● On site at GenesisCare ● At partner hospitals ● Coming soon GK Gamma Knife LO ¹⁷⁷Lutetium octreotate therapy LP ¹⁷⁷Lutetium PSMA therapy

Our centres

Chelmsford

Tel: 0808 301 9889

enquiries@genesiscare.co.uk



About

Diagnostics

Breast
Consultants

Urology
Consultants

National
services

Neuro-
oncology

A - Z
Consultants

The latest cancer treatments and innovative care pathways as standard

Advanced radiotherapy

We offer innovative and advanced radiotherapy techniques as part of integrated care pathways which support the entire patient journey from diagnosis to survivorship.

Volumetric modulated arc therapy (VMAT)

Provided as standard, this modality gives high conformity, reducing toxicity and preserving options for future treatment.

Stereotactic ablative radiotherapy (SABR)

Delivers multiple finely targeted beams of high-dose radiation and is revolutionising the treatment of small tumours such as lung, liver, pancreas and bone cancers.

Stereotactic radiosurgery (SRS)

Delivers precisely-targeted radiation in fewer high-dose treatments than traditional therapy to preserve healthy tissue.

Gamma Knife radiosurgery

Provides maximum precision for the most complex and critically located targets in the brain.

MRIdian

Combines precision radiotherapy with cutting-edge magnetic resonance (MR) image guidance to precisely locate tumours and significantly improve radiotherapy targeting accuracy in moving tumours.

Surface-guided radiotherapy (SGRT)

For tattoo-free treatment and healthy tissue preservation.

Deep inspiration breath hold (DIBH) technique

Using SGRT, this improves patient comfort and reduces damage to the heart, lungs and liver.

Image-guided radiotherapy (IGRT)

We use 3D cone beam CT verification for precise internal imaging.

Rectal spacers

An organ-sparing spacer for prostate cancer patients which significantly reduces rectal toxicity and side effects, improving quality of life.

Chemotherapy

We provide a full range of systemic anti-cancer therapies in private, individual suites with one-to-one nursing and 24/7 on call triage for acute admissions. Our iQemo prescribing and management platform ensures a high-quality approach to all chemotherapy administrations.

We are introducing genomic profiling to evaluate effectiveness.

Theranostics

A revolutionary treatment combining imaging technology with radiopharmaceuticals offering a fast and accurate diagnosis with precisely targeted therapy. We offer ¹⁷⁷Lutetium PSMA therapy for metastatic castration-resistant prostate cancer (mCRPC) and will soon offer ¹⁷⁷Lutetium octreotate therapy for neuroendocrine tumours.

Refer for diagnostics directly
to GenesisCare or to a partner
surgeon at a local hospital



Oncology

Chelmsford

Tel: 0808 301 9889

enquiries@genesiscare.co.uk

 GenesisCare

About

Diagnostics

Breast
Consultants

Urology
Consultants

National
services

Neuro-
oncology

A - Z
Consultants

We believe care should be focused on the individual, not just the disease

Penny Brohn UK

Our patients have access to a 'whole person' approach to care, made possible through our unique partnership and funding of Penny Brohn UK services within many of our centres.

Penny Brohn UK is a national cancer charity that helps people live well with the impact of cancer, by paying attention to their mind, body, spirit and emotions. Patients are assigned a Penny Brohn wellbeing consultant who will evaluate their cancer-related concerns and design a series of therapies tailored to individual needs. This is provided at no extra cost to patients undergoing chemotherapy or radiotherapy at GenesisCare or their insurers. Personalised wellbeing therapies offered include acupuncture, massage and counselling.

In addition to services within our centres where available, Penny Brohn UK also provides a telephone and online wellbeing support service to all GenesisCare patients. Each patient can partake in telephone consultations so that we can understand what additional help is needed to support their health and wellbeing. There are also weekly timetabled online sources of support that can be accessed.

We are the only independent healthcare provider in the UK to embed a cancer charity within our service and fully fund it for all of our patients.



Wellbeing

Chelmsford

Tel: 0808 301 9889

enquiries@genesiscare.co.uk

We do more than treat the disease

Exercise medicine

Our partnership with the world-leading expert, Professor Robert Newton from the Edith Cowan University, enables us to offer an evidence-based approach to exercise medicine. Exercise is effective in reducing the burden of several specific cancers and can demonstrate improvements in treatment tolerance, muscle mass, physical function, self-esteem, QoL and cancer-related fatigue.

Our exercise medicine specialists are trained physiotherapists and work with consultants to create safe and effective exercise programmes that are specific to patient diagnosis and treatment plans. We provide support and resources to promote behaviour change with regard to physical activity, including a free GenesisCare Exercise Medicine app. Many patients who use our app report a huge increase in how they feel about their health.

Exercise medicine is provided at no cost to patients undergoing chemotherapy or radiotherapy at GenesisCare or their insurers.



Exercise medicine

Chelmsford

Tel: 0808 301 9889

enquiries@genesiscare.co.uk

 GenesisCare

About

Diagnostics

Breast
Consultants

Urology
Consultants

National
services

Neuro-
oncology

A - Z
Consultants



Useful contacts

Private Medical Insurers

Aviva	0800 068 5821
AXA PPP	0800 132 203
Bupa	0808 256 2713
General and Medical	0800 970 9442
Saga	0800 027 1331
Vitality	0345 602 3523
WPA	0345 122 3100

GenesisCare cancer treatments are covered by private medical insurance and our **fully integrated care pathways** include diagnostic tests, consultant appointments, surgery, chemotherapy, radiotherapy and follow-up care.

Self-pay prices are available upon request – call your local centre

Using PMI and self-pay is easy with GenesisCare

We recommend that your patient contacts their insurance company at the **point of diagnostic referral** to get the most benefit from their private medical insurance.



At GenesisCare, a cancer diagnosis, personalised treatment plan and private medical insurance approval can take as little as 24 hours.

Treatment within five days from planning scan
Better care faster

We can help with
pre-authorisation



Funding

Chelmsford

Tel: 0808 301 9889

enquiries@genesiscare.co.uk

 GenesisCare

About

Diagnostics

Breast
Consultants

Urology
Consultants

National
services

Neuro-
oncology

A - Z
Consultants



Services offered

Imaging

CT, PET/CT, PSMA PET/CT, SPECT/CT

Digital mammography

1.5T MRI, 3T MRI, fMRI, mpMRI

Ultrasound

X-ray

Genetic and genomics

Screening for:

Solid tumours

Leukaemias and lymphomas

Sarcomas

BRCA-1 and BRCA-2 genetic testing

Pathology

Blood tests

Gynaecology endoscopies

Head and neck endoscopies

Flexible cystoscopy

Biopsy:

Bone aspirate biopsy

Core biopsy

Fine needle aspiration

Transperineal targeted prostate biopsy

We use the latest-generation technology to accurately diagnose and plan



**Rapid
access
pathways**

MRI, CT, PET/CT – **from 24 hours**

Consultation – **from 24 hours**

Most appointments are available on the same day and we also have a range of specialist clinics as part of our fully integrated care pathways.

Please check with your local centre for information about diagnostic tests available.

**Treatment within five days from planning scan
Better care faster**

**Refer to the summary overleaf for
the location of diagnostic services at
GenesisCare and partner hospitals**



Diagnostic tests

Chelmsford

Tel: 0808 301 9889

enquiries@genesiscare.co.uk

 GenesisCare

About

Diagnostics

Breast
Consultants

Urology
Consultants

National
services

Neuro-
oncology

A - Z
Consultants

			One stop breast clinic	Breast screening*	UrologyHub	Blood tests	CT	Digital X-ray	fMRI	Genetic/genomic testing	Mammograms	MRI	PET/CT	SPECT/CT	Ultrasound
Birmingham	T 01213 533 055 F 01213 533 792	Little Aston Hall Drive, Sutton Coldfield, B74 3BF	●		●	●	●			●	●				●
Bristol	T 01454 456 500 F 01454 456 502	300 Park Avenue, Aztec West, Bristol, BS32 4SY			●	●	●			●	●	●			●
Cambridge	T 01223 907 600 F 01638 662 134	The Oaks, Fordham Road, Newmarket, CB8 7XN	●	●	●	●	●			●	●				●
Chelmsford	T 01245 987 901 F 01245 461 071	Springfield Cancer Centre, Lawn Lane, CM1 7GU	●		●	●	●			●	●				●
Elstree	T 02082 369 040 F 02082 369 041	Unit 710, Centennial Park Borehamwood, WD6 3SZ	●		●	●	●			●	●				●
Guildford	T 01483 806 000 F 01483 563 597	BMI Oncology Centre, 46 Harvey Road, GU1 3LX			●	●	●				●	●			●
London	T 02038 480 900	Cromwell Hospital, 164-178 Cromwell Rd, SW5 0TU	●		●	●	●	●	●	●	●	●	●	●	●
Maidstone	T 01732 207 000 F 01732 841 333	17 Kings Hill Avenue, West Malling, ME19 4UA	●	●	●	●	●	●	●	●	●				●
Milton Keynes	T 01908 467 700 F 01908 238 415	Sunrise Parkway, Linford Wood East, MK14 6LS	●	●	●	●	●			●	●				●
Nottingham	T 01158 077 400 F 01159 200 760	Sherwood Lodge Drive, Nottingham, NG5 8RX	●		●	●	●			●	●				●
Oxford	T 01865 237 700 F 01865 770 016	Peter's Way, Sandy Lane West, OX4 6LB	●	●	●	●	●	●	●	●	●	●			●
Portsmouth	T 02392 484 992 F 02392 471 966	Bartons Road, Havant, PO9 5NA	●●		●	●				●●	●				●
Southampton	T 02381 277 900 F 02380 764 962	Spire Hospital, Chalybeate Close, SO16 6UY	●		●	●	●			●	●				●
Windsor	T 01753 418 444 F 01753 864 036	69 Alma Road, Windsor, SL4 3HD	●	●	●	●	●		●	●	●	●	●	●	●

● On site at GenesisCare ● At partner hospitals ● Coming soon

*From July 2021

Diagnostic tests

Chelmsford

Tel: 0808 301 9889

enquiries@genesiscare.co.uk



Diagnostics

Imaging including:

- Breast ultrasound
- Digital mammograms and tomosynthesis
- Contrasted enhanced mammography
- Stereotactic biopsy
- MRI breast including MR-guided breast biopsy
- PET/CT

Core needle biopsy

Fine-needle aspiration

Routine and specialised blood tests

Genetic testing

Treatments

Advanced radiotherapy as standard, including:

- Volumetric modulated arc therapy (VMAT)
- Image-guided radiotherapy (IGRT)
- Tattoo-free surface-guided radiotherapy (SGRT)
- Organ-at-risk sparing deep inspiration breath hold (DIBH)
- Stereotactic ablative radiotherapy (SABR)

Chemotherapy

- Full range of systemic anti-cancer therapies
- Private, individual chemotherapy suites
- One-to-one nursing and 24/7 on-call triage
- iQemo prescribing and management platform
- Genomic profiling

Wellbeing

- Penny Brohn UK wellbeing programme
- Exercise medicine



Our Breast Service of the Future combines best practice and latest technologies



Rapid access pathways

Diagnostics	- from 24 hours
Chemotherapy	- from five days
Radiotherapy	
Urgent	- same day
Palliative	- two days from plan
Radical	- five days from plan

Our **rapid access breast pathways** are comprehensive covering all modalities and including an acute admission pathway.

Treatment within five days from planning scan
Better care faster

Search our surgeons
and oncologists



Breast

Chelmsford

Tel: 0808 301 9889

enquiries@genesiscare.co.uk

 GenesisCare

About

Diagnostics

Breast
Consultants

Urology
Consultants

National
services

Neuro-
oncology

A - Z
Consultants

Surgeons

Breast

Chelmsford

Tel: 0808 301 9889

enquiries@genesiscare.co.uk



Surgeon



Miles Banwell

Plastic Surgeon

MBBS, PhD, FRSC (Plast)

Special interest: Breast reconstruction, cosmetic breast, facial aesthetics, body contouring

NHS trust: Mid Essex Hospital Services NHS Trust

Practising at: The Holly Private Hospital, Spire Hartwood

Surgeon



Howard Bradpiece

General Surgeon

MB BCh

Special interest: Benign and malignant breast conditions, one stop and intra-operative sentinel node sampling and reconstructive breast surgery. Hernia surgery and vasectomy

NHS trust: N/A

Practising at: Ramsay The Rivers, The Holly Private Hospital

Surgeon



Sankaran Chandrasekharan

General Surgeon

MBBS, FRCS

Special interest: Diagnosis and treatment of breast cancer, breast surgery, oncoplastic breast surgery

NHS trust: East Suffolk and North Essex NHS Foundation Trust

Practising at: Ramsay The Oaks, Ramsay Springfield

Surgeon



Dennis-Wayne Chicken

General Surgeon

MB ChB, MRCS (Eng), FRCS (Gen Surg)

Special interest: Breast cancer, benign disease, screening, familial breast cancer, breast conservation, reconstruction, assessment of breast lumps, male breast problems, thyroid and parathyroid surgery, gallbladder, hernia, lymph node biopsy, skin lesions

NHS trust: Basildon & Thurrock University Hospitals NHS Foundation Trust

Practising at: Spire Hartwood, Nuffield Health Brentwood

Surgeon



Harleen Deol

Breast Surgeon

MBBS, MRCS, MSc, DipIC, FRCS (Gen Sur)

Special interest: Breast – benign disease, cancer, family history risk management, oncoplastic and reconstructive breast surgery, cosmetic breast surgery

NHS trust: East and North Hertfordshire NHS Trust

Practising at: Spire Harpenden, Pinehill, Ramsay The Rivers, Queen Elizabeth II PPU

Surgeon



Sascha Dua

General Surgeon

MBBS, FRCS, MD

Special interest: Breast reduction, breast reconstruction, oncoplastic breast surgery, early detection of breast cancer, breast cancer prevention, pregnancy-associated breast changes, genetics, family history, breast cysts, breast pain

NHS trust: East and North Hertfordshire NHS Trust

Practising at: Nuffield Health Brentwood, Spire Hartwood

Surgeon



Veronica Grassi

Consultant Oncoplastic Breast Surgeon

MD, CCT (Gen surg)

Special interest: Malignant and benign breast disease, oncoplastic breast reconstructive surgery

NHS trust: The Princess Alexandra Hospital NHS Trust

Practising at: Ramsay The Rivers, Hospital of St John & St Elizabeth

Surgeon



Emma Gray

General Surgeon

MB BChir

Special interest: Breast surgery, paediatric general surgery, gallstones and groin hernias

NHS trust: Mid and South Essex NHS Foundation Trust

Practising at: Spire Wellesley

Surgeons

Breast

Chelmsford

Tel: 0808 301 9889

enquiries@genesiscare.co.uk

 GenesisCare

Surgeon



Wael Ismail
General Surgeon
MB BCH

Special interest: Breast oncology, hernia surgery, breast surgery
NHS trust: Barking, Havering & Redbridge University Hospitals NHS Trust
Practising at: Spire Hartswood

Surgeon



Arikoge Ogedegbe
General Surgeon
MD, FRCS (Gen), FRCS (Ed) MBBS

Special interest: Breast cancer, breast pain, laparoscopy for gallstones and hernia repair. Hernias, lumps and bumps, breast augmentation, breast reduction, paediatric surgery
NHS trust: Barking, Havering & Redbridge University Hospitals NHS Trust
Practising at: Nuffield Health Brentwood, Spire Hartswood, Spire London East

Surgeon



Akin Ojo
General Surgeon
MB BS

Special interest: Breast disease, one stop clinic, family history of breast cancer, sentinel node biopsy, breast conservation, mastectomy, thyroid and parathyroid surgery, laparoscopy, gallbladder, hernia, endocrine disease and surgery, skin lesions
NHS trust: Barking, Havering & Redbridge University Hospitals NHS Trust
Practising at: Spire Hartswood, Spire London East

Surgeon



Antony Pittathankal
General Surgeon
MB BS

Special interest: Thyroid disorders/surgery, breast disease, parathyroid gland surgery, endocrine surgery, breast reconstruction, oncoplastic breast surgery
NHS trust: Barking, Havering & Redbridge University Hospitals NHS Trust
Practising at: Nuffield Health Brentwood, Spire Hartswood, Spire London East

Surgeon



Neil Rothnie
General Surgeon
MS (Lond), MB BS, FRCS

Special interest: Hernias, including inguinal hernia, breast surgery, surgical oncology, breast disease, groin surgery
NHS trust: Mid and South Essex NHS Foundation Trust
Practising at: Spire Wellesley

Surgeon



Ali Salih
General Surgeon
MS, FRCS, FRCS (Gen and Breast), DipS, MB ChB

Special interest: Breast surgery, general surgery, oncology
NHS trust: Basildon & Thurrock University Hospitals NHS Foundation Trust
Practising at: Nuffield Health Brentwood, Spire Hartswood

Surgeon



Simon Smith
Breast and Endocrine Surgeon
MB BS, BSc, MS

Special interest: Breast and endocrine, oncoplastic breast surgery, reconstruction and cosmetic breast surgery, thyroid surgery, benign thyroid disease, parathyroid surgery, minimally invasive parathyroidectomy for hypercalcaemia
NHS trust: Mid Essex Hospital Services NHS Trust
Practising at: Ramsay Springfield

Surgeon



Steven Snooks
General Surgeon
MB BS, MD, FRCS, LLB (Hons), Degree of the Utter Bar

Special interest: Breast disease, breast oncology, breast surgery. Hernias, including inguinal hernia/sports groin injury. Excision of skin lesions
NHS trust: N/A
Practising at: Spire London East, The Holly Private Hospital



Harun Thomas

Consultant Oncoplastic Breast Surgeon

MBBS, MS (Gen Surg), FRCS, MS (Oncoplastics)

Special interest: Breast lump investigation, breast lump removal, breast reconstruction following mastectomy, sentinel lymph node biopsy and lymph node removal, mastectomy

NHS trust: Mid and South Essex NHS Foundation Trust

Practising at: Spire Wellesley, Nuffield Health Brentwood

We work with recognised local surgeons and design personalised treatment plans for each patient

Surgeons

Breast

Chelmsford

Tel: 0808 301 9889

enquiries@genesiscare.co.uk

Oncologists

Breast

Chelmsford

Tel: 0808 301 9889

enquiries@genesiscare.co.uk



Dr Stephanie Gibbs

Clinical Oncologist
MBBS, MRCP, FRCR

Special interest: Colorectal, urological, including bladder and prostate, and breast

NHS trust: N/A

GenesisCare Chelmsford

Oncologist



Dr Mukesh Mukesh

Clinical Oncologist
MBBS, MRCP, FRCR, MSc (Onc)

Special interest: Breast, haematological, skin, including metastatic melanoma, and immunotherapy

NHS trust: Colchester Hospital University NHS Foundation Trust

GenesisCare Chelmsford, Cambridge

Oncologist



Dr Julian Singer

Clinical Oncologist
MB BS, MRCP, FRCR

Special interest: Breast, lung, biological and hormone therapy

NHS trust: The Princess Alexandra Hospital NHS Trust

GenesisCare Chelmsford

Oncologist



Dr Hafiz Algurafi

Clinical Oncologist
MB BCh, BAO (NUI), LRCP & SI, MRCP, FFR RCSI, FRCR

Special interest: Breast, gynaecological and skin

NHS trust: Mid and South Essex NHS Foundation Trust

GenesisCare Chelmsford

Oncologist



Dr Abdel Hamid

Clinical Oncologist
MB ChB, MSc, FRCR

Special interest: Urological, breast, head and neck, and gynaecological

NHS trust: Colchester Hospital University NHS Foundation Trust

GenesisCare Chelmsford

Oncologist



Dr Eliot Sims

Clinical Oncologist
MA, MD, MRCP, FRCR

Special interest: Breast and brain

NHS trust: Barking, Havering & Redbridge University Hospitals NHS Trust

GenesisCare Chelmsford

Oncologist



Dr Sunil Skaria

Clinical Oncologist
MSc, MRCP (UK), MRCP (Ireland), FRCR

Special interest: Breast, lung, skin, thoracic, upper gastrointestinal (GI), hepatobiliary, neuroendocrine tumours, and sarcomas

NHS trust: Mid Essex Hospital Services NHS Trust, East Suffolk and North Essex NHS Foundation Trust

GenesisCare Chelmsford

Oncologist

Our clinical governance teams oversee the development of the best practice, innovative protocols and clinical evaluation as well as approval of all consultants to practise at our centres



Diagnostics

⁶⁸Gallium PSMA PET/CT

PSA testing

MRI and mpMRI scanning

Transrectal ultrasound scan (TRUS)
and TRUS biopsy

Transperineal targeted biopsy

Treatments

Advanced radiotherapy as standard:

Volumetric modulated arc therapy (VMAT)

Image-guided radiotherapy (IGRT)

Surface-guided radiotherapy (SGRT)

Stereotactic ablative radiotherapy (SABR)

MRIdian, MRI-guided radiotherapy

Rectal spacers

Chemotherapy

Penny Brohn UK wellbeing programme

Exercise medicine

¹⁷⁷Lutetium PSMA therapy uses PET/CT imaging and radiopharmaceuticals to diagnose and treat metastatic prostate disease.

Multidisciplinary and multi-modality care includes innovative treatment protocols and is standardised across our network of centres.

Our prostate service combines the latest diagnostics, best practice and evidence-based techniques



Rapid access pathways

Diagnostics	– from 24 hours
Chemotherapy	– from five days
Radiotherapy	
Urgent	– same day
Palliative	– two days from plan
Radical	– five days from plan

**Treatment within five days from planning scan
Better care faster**

**List of prostate surgeons
and oncologists overleaf**



Prostate

Chelmsford

Tel: 0808 301 9889

enquiries@genesiscare.co.uk

 **GenesisCare**

About

Diagnostics

Breast
Consultants

Urology
Consultants

National
services

Neuro-
oncology

A - Z
Consultants

Surgeons

Prostate

Chelmsford

Tel: 0808 301 9889

enquiries@genesiscare.co.uk


 GenesisCare
**Jayanta Barua****Urologist**

MB ChB, FRCS, FRCS (Urol), MD

Special interest: Urinary tract infection, benign prostate enlargement and cancer, urodynamics, bladder cancer, female urology, urinary incontinence, erectile dysfunction, stone disease

NHS trust: Barking, Havering & Redbridge University Hospitals NHS Trust

Practising at: Spire Hartswood, Nuffield Health Brentwood, Spire London East

**John Corr****Urologist**

MB BCh, BAO, FRCSi, FRCS (Urol)

Special interest: Bladder, vasectomy (including reversal), paediatric urology, fertility/infertility and assisted conception, prostate disease including prostate cancer, urological oncology, kidney disorders

NHS trust: East Suffolk and North Essex NHS Foundation Trust

Practising at: Ramsay The Oaks

**Anand Kelkar****Urologist**

MB BS

Special interest: Robotic prostatectomy for prostate cancer, prostate conditions, PSA testing, complex pelvic surgery, kidney and bladder cancer, kidney stone disease, urinary infections

NHS trust: Barking, Havering & Redbridge University Hospitals NHS Trust, University College London Hospitals NHS Foundation Trust

Practising at: Spire Hartswood, Spire London East

**Zafar Maan****Urologist**

BSc (Hons), MBBS, MRCS, MSc (Urol), FRCS (Urol), MA

Special interest: Endourology, laser prostate, stone surgery, andrology, paediatric urology, urological cancers and general female urology

NHS trust: East Suffolk and North Essex NHS Foundation Trust

Practising at: Ramsay The Oaks

Surgeon

Surgeon

Surgeon

Surgeon

**Andrew Ballaro****Urologist**

BSc (Hons), MBBS, FRCS, MSc (Urol), MD, FRCS (Urol)

Special interest: Urology, kidney stones, ureteric stent problems, laser stone surgery, prostatitis, PSA, prostate MRI and template prostate biopsy, prostate cancer, benign prostate disease

NHS trust: Barking, Havering & Redbridge University Hospitals NHS Trust

Practising at: Spire Hartswood, Hospital of St John & St Elizabeth, Spire London East, Nuffield Brentwood, BMI Hendon, Highgate, The Wellington

Surgeon

**Shiv Bhanot****Urologist**

MS, FRCS

Special interest: Full range of male and female urological treatments

NHS trust: Barking, Havering & Redbridge University Hospitals NHS Trust

Practising at: Spire London East, Spire Hartswood, BMI The London Independent, Nuffield Health Brentwood

Surgeon

**Sandy Gujral****Urologist**

BSc (Hons), FRCS, FRCS (Urol), FEBU

Special interest: Bladder investigations, stress incontinence, prostate surgery, kidney stone removal, vasectomy

NHS trust: Barking, Havering & Redbridge University Hospitals NHS Trust

Practising at: Spire Hartswood, Spire London East

Surgeon

**Henry Lewi****Urologist**

BSc, MB Bch, FRCS (Edin)

Special interest: Incontinence (urine/faeces), prostate disease including prostate cancer, urological oncology, reconstructive surgery, pelvic floor surgery, stone disease

NHS trust: N/A

Practising at: Ramsay Springfield

Surgeon

Surgeons

Prostate

Chelmsford

Tel: 0808 301 9889

enquiries@genesiscare.co.uk



Surgeon

**William McAllister****Urologist**

MA, MS, FRCS (Urol)

Special interest: Benign prostatic enlargement, incontinence, Botox for overactive bladder, prostate cancer, template biopsy, fusion biopsy, raised PSA, urine infections, foreskin problems, vasectomy and reversal, kidney stones, LUTS, urodynamics

NHS trust: Mid Essex Hospital Services NHS Trust

Practising at: Ramsay Springfield

Surgeon

**Martin Nuttall****Urologist**

MA, MD, FRCS (Urol)

Special interest: Urinary infections, haematuria, kidney cancer, stones, prostate cancer, male urinary symptoms, erectile dysfunction, kidney surgery, template and MRI fusion prostate biopsy, Urolift

NHS trust: East Suffolk and North Essex NHS Foundation Trust, Mid Essex Hospital Services NHS Trust

Practising at: Ramsay Springfield

Surgeon

**Rajiv Pillai****Urologist**

MB BS

Special interest: Prostate cancer, all benign prostate disorders, high PSA, blood in urine, kidney stones, men's health, urinary tract infections, bladder cancer, kidney cancer, chronic prostatitis, bladder dysfunction, erectile dysfunction

NHS trust: East Suffolk and North Essex NHS Foundation Trust

Practising at: Ramsay The Oaks

Surgeon

**Bernard Potluri****Urologist**

MBBS, MS, FRCS, Dip (Urol)

Special interest: Urological cancers, prostate cancer, radical prostatectomy, brachytherapy, erectile dysfunction, haematuria assessment, no scalpel vasectomy and vasectomy reversal

NHS trust: N/A

Practising at: Ramsay The Rivers, Nuffield Health Brentwood

Surgeon

**Ramachandran Ravi****Urologist**

FRCS, FRCSEd (Gynae), FRCS (Urol), FEBU, MCh (Urol), MS (Gen Surg), MBBS

Special interest: Renal and ureteric stones, prostate disease including prostate cancer, laser prostatectomy, bladder cancer, laparoscopy, reconstructive surgery, urinary stones, LUTS

NHS trust: Basildon & Thurrock University Hospitals NHS Foundation Trust

Practising at: Nuffield Health Brentwood, Spire Hartswood

Surgeon

**Gerald Rix****Urologist**

BA (Hons), Bchir, MB, MA (Hons), FRCS (Eng), FRCS (Urol)

Special interest: Laser stone and prostate treatment, urological oncology and general female urology, vasectomy and microsurgical vasectomy reversal

NHS trust: East Suffolk and North Essex NHS Foundation Trust

Practising at: Ramsay The Oaks

Surgeon

**Rateb Samman****Urologist**

MD, FRCS, MSc (Urol), FRCS (Urol), FEBU, DipUrol

Special interest: Uro-oncology, endo-oncology and female urology

NHS trust: The Princess Alexandra Hospital NHS Trust

Practising at: Ramsay The Rivers, Ramsay Springfield, BMI The London Independent

Surgeon

**Daniel Swallow****Urologist**

MB BChir

Special interest: General urology and urological stone disease

NHS trust: Mid Essex Hospital Services NHS Trust

Practising at: Ramsay Springfield



Ranjan Thilagaraja

Urologist

MS, FRCS (Urol)

Special interest: Prostate, BPH, REZUM steam therapy, Urolift, TURP, Greenlight laser prostatectomy, interstitial cystitis, prostate disease including cancer, kidney stones

NHS trust: The Royal Marsden NHS Foundation Trust

Practising at: Ramsay Springfield



Jaspal Viridi

Urologist

FRCS (Eng), FRCS (Urol)

Special interest: General urology with special interest in bladder, prostate and testicular cancer, total stone management, BPH, chronic prostatitis and UTIs

NHS trust: The Princess Alexandra Hospital NHS Trust

Practising at: Ramsay The Rivers, The Holly Private Hospital

Surgeons

Prostate

Our clinical governance teams oversee the development of the best practice, innovative protocols and clinical evaluation as well as approval of all consultants to practise at our centres

Chelmsford

Tel: 0808 301 9889

enquiries@genesiscare.co.uk

Oncologists

Prostate

Chelmsford

Tel: 0808 301 9889

enquiries@genesiscare.co.uk



Oncologist



Dr Imtiaz Ahmed

Clinical Oncologist
MBBS, MRCP, FRCR

Special interest: Urological, head and neck

NHS trust: Mid and South Essex NHS Foundation Trust

GenesisCare Chelmsford

Oncologist



Dr Abby Cyriac

Clinical Oncologist
MBBS, FRCR

Special interest: Gynaecological, upper gastrointestinal (GI) and urological

NHS trust: Mid and South Essex NHS Foundation Trust

GenesisCare Chelmsford

Oncologist



Dr Stephanie Gibbs

Clinical Oncologist
MBBS, MRCP, FRCR

Special interest: Colorectal, urological, including bladder and prostate, and breast

NHS trust: N/A

GenesisCare Chelmsford

Oncologist



Dr Abdel Hamid

Clinical Oncologist
MB ChB, MSc, FRCR

Special interest: Urological, breast, head and neck, and gynaecological

NHS trust: Colchester Hospital University NHS Foundation Trust

GenesisCare Chelmsford

Oncologist



Dr Dakshinamoorthy Muthukumar

Clinical Oncologist
MD, MSc, MRCP, FRCR

Special interest: Thoracic, lung and urological, including prostate, bladder and kidney

NHS trust: Colchester Hospital University NHS Foundation Trust, East Suffolk and North Essex NHS Foundation Trust

GenesisCare Chelmsford

Oncologist



Dr Richard Shaffer

Clinical Oncologist
BSc, MBBS, MRCP, FRCR

Special interest: Prostate, bladder, brain, skin. Benign disease – Dupuytren's, Ledderhose, plantar fasciitis and Achilles tendonitis

NHS trust: N/A

GenesisCare Guildford, Birmingham, Chelmsford, Elstree, Maidstone, Milton Keynes, Nottingham, Oxford, Portsmouth, Southampton, Windsor

Oncologist



Dr David Tsang

Clinical Oncologist
MBBS, MRCP, FRCR, MPhil (Medical Law)

Special interest: Cholangiocarcinoma, upper gastrointestinal (GI), urological including prostate and bladder, gastrointestinal (GI), pancreatic and colorectal cancer

NHS trust: Mid and South Essex NHS Foundation Trust, Basildon & Thurrock University Hospitals NHS Foundation Trust

GenesisCare Chelmsford



Diagnostic

⁶⁸Gallium is paired with a special carrier molecule that specifically targets cancer cells to create a highly sensitive radiotracer. This enables us to highlight cancer sites, including metastases, using PET/CT imaging.

Therapy

If the PET/CT scan shows specific uptake of the carrier molecule by the target cancer cells, treatment can commence within two weeks. The radioisotope ¹⁷⁷Lutetium is paired with a carrier molecule to create a radiopharmaceutical that can seek out and destroy the cancer cells. The carrier molecule transports ¹⁷⁷Lutetium to the target cells where it can deliver a targeted dose of radiation, while minimising damage to healthy tissues.

We plan to extend to other diseases including stomach and pancreatic cancer.

Personalised seek and destroy treatment for hard-to-treat cancers using PET/CT imaging and radionuclides



Available at Windsor and Oxford

For advanced prostate cancer and neuroendocrine tumours

Referrals accepted from the UK, US, UAE and Europe

We offer ¹⁷⁷Lutetium PSMA therapy for metastatic castration-resistant prostate cancer at our Windsor centre and ¹⁷⁷Lutetium octreotate therapy for neuroendocrine tumours will soon be available at Oxford and Windsor.

When required, we will help your patients with transport depending on treatment and location. Please enquire for more details.

**Treatment within two weeks of initial consultation
Better care faster**

List of Theranostics consultants overleaf



Theranostics

Chelmsford

Tel: 0808 301 9889

enquiries@genesiscare.co.uk

 **GenesisCare**

About

Diagnostics

Breast Consultants

Urology Consultants

National services

Neuro-oncology

A - Z Consultants



Dr Yong Du

Nuclear Medicine Physician

MBBS, MSc, PhD, FRCP

Special interest: Theranostics, nuclear medicine, PET/CT, SPECT/CT and radionuclide target therapy

NHS trust: The Royal Marsden NHS Foundation Trust

GenesisCare Windsor



Dr Andrew Weaver

Clinical Oncologist

MB BS, MRCP, FRCR, MD

Special interest: Nuclear medicine therapies treating patients with various endocrine cancers.

NHS trust: Oxford University Hospitals NHS Foundation Trust

GenesisCare Oxford

Evaluating and adopting
new innovation that improves
life outcomes is at the heart
of what we do



Precise radiotherapy

SABR uses high-quality CT imaging to deliver multiple beams of radiation in an accurate and conformable dose. This enables sufficient dose intensity to ensure ablation of tumour cells over a small number of fractions, with minimal toxicity to healthy tissue.

SABR is also called stereotactic body radiotherapy (SBRT). SABR treatment to the brain is called stereotactic radiosurgery (SRS) – see our separate section on neuro-oncology.

SABR is now used for many cancers, such as lung and liver, replacing surgery in many instances. We are a SABR specialist and this will be offered at all GenesisCare centres for simple cases. Complex cases, including spine, re-irradiation, liver, pancreas and central lung, are treated at our SABR specialist centres. Every case is reviewed by our SABR advisory team.

*From August 2021

Stereotactic ablative radiotherapy (SABR) has revolutionised the treatment of small tumour sites



Complex SABR at

Birmingham
Bristol
Cambridge
Guildford*
London
Nottingham
Oxford

When required, we will help your patients with transport depending on treatment and location. Please enquire for more details.

Treatment within five days from planning scan
Better care faster

List of SABR
consultants overleaf



SABR

Chelmsford

Tel: 0808 301 9889

enquiries@genesiscare.co.uk

 **GenesisCare**

About

Diagnostics

Breast
Consultants

Urology
Consultants

National
services

Neuro-
oncology

A - Z
Consultants

Oncologist



Dr Daniel Ajzenstejn

Clinical Oncologist

FRCR, DPhil, MSc(Onc), MRCP, MB BS

Special interest: Lung and skin. Stereotactic ablative radiotherapy (SABR)

NHS trust: Milton Keynes University Hospital NHS Foundation Trust, Oxford University Hospitals NHS Foundation Trust

GenesisCare Milton Keynes, Oxford

Oncologist



Dr Nicola Anyamene

Clinical Oncologist

MBBS, FRCR, MRCP

Special interest: Urology, upper gastrointestinal (GI), hepatobiliary cancers, stereotactic radiosurgery (SRS) and MR linac

NHS trust: East and North Hertfordshire NHS Trust

GenesisCare London

Oncologist



Dr Shahzeena Aslam

Clinical Oncologist

MB BS, MSc (Oncology), MRCP, FRCR

Special interest: Lung, prostate, breast and bladder. Stereotactic ablative radiotherapy (SABR)

NHS trust: Bedfordshire Hospitals NHS Foundation Trust, Cambridge University Hospitals NHS Foundation Trust

GenesisCare Cambridge, Milton Keynes

Oncologist



Dr Luis Aznar-Garcia

Clinical Oncologist

MD, PhD, MRCP

Special interest: Brain metastases, hepatobiliary and breast. Stereotactic radiosurgery (SRS) and stereotactic ablative radiotherapy (SABR)

NHS trust: Nottingham University Hospitals NHS Trust

GenesisCare Nottingham

Oncologist



Dr Patryk Brulinski

Clinical Oncologist

MD/Physician (Hons), MRCP, FRCR, PGDipl Oncology

Special interest: Urological, including prostate, kidney and bladder. Stereotactic ablative radiotherapy (SABR) and new systemic treatment strategies

NHS trust: Maidstone and Tunbridge Wells NHS Trust

GenesisCare Maidstone

Oncologist



Dr Philip Camilleri

Clinical Oncologist

MD, MRCP, FRCP

Special interest: Urology including prostate, testicular, bladder; stereotactic ablative body radiotherapy (SABR) and MR Linac

NHS trust: Oxford University Hospitals NHS Foundation Trust

GenesisCare Milton Keynes, Oxford

Oncologist



Dr Prabir Chakraborti

Clinical Oncologist

MBBS, MSc, FRCS, FRCP

Special interest: Breast, urology including prostate, bladder and kidney, stereotactic ablative radiotherapy (SABR)

NHS trust: Buckinghamshire Healthcare NHS Trust

GenesisCare Milton Keynes, Oxford, Windsor

Oncologist



Dr Andrew Chan

Clinical Oncologist

MBChB (Hons), BMedSci (Hons), MRCP, FRCP

Special interest: Urological including prostate, kidney and bladder. Stereotactic ablative radiotherapy (SABR)

NHS trust: University Hospitals Coventry and Warwickshire NHS Trust

GenesisCare Birmingham

Consultants
SABR

Chelmsford

Tel: 0808 301 9889

enquiries@genesiscare.co.uk



Consultants

SABR

Chelmsford

Tel: 0808 301 9889

enquiries@genesiscare.co.uk



Dr Nicola Dallas

Clinical Oncologist
MBChB, MRCP, FRCR

Special interest: Urology, including prostate, bladder, kidney and testicular, head and neck, thyroid and MR Linac

NHS trust: Royal Berkshire NHS Foundation Trust

GenesisCare Oxford, Windsor

Oncologist



Dr Muthuveni Ezhil

Clinical Oncologist
MBBS, MRCP, FRCR

Special interest: Respiratory motion management and advanced technical radiotherapy, stereotactic ablative radiotherapy (SABR) and MR Linac

NHS trust: Royal Surrey NHS Foundation Trust

GenesisCare Guildford, London, Oxford

Oncologist



Dr Andrew Gaya

Clinical Oncologist
BSc, MB BS, MRCP, FRCR, MD

Special interest: Upper and lower GI and hepatobiliary cancers and MR Linac

NHS trust: Guy's and St Thomas' NHS Foundation Trust

GenesisCare London, Oxford

Oncologist



Dr Rafiqul Islam

Clinical Oncologist
MBBS, MRCP, FRCR

Special interest: Colorectal, lung, cancer of unknown primary (CUP) and MR linac

NHS trust: Mid and South Essex NHS Foundation Trust

GenesisCare Chelmsford, London

Oncologist



Dr John Conibear

Clinical Oncologist
MB BCh, BSc, MRCP, MSc, FRCR, MD (Res)

Special interest: Breast and lung oncology, and MR linac

NHS trust: Barts Health NHS Trust

GenesisCare London

Oncologist



Dr Prantik Das

Clinical Oncologist
MBBS, MRCP, FRCR

Special interest: Urological, lung, upper gastrointestinal (GI), neuroendocrine and MR Linac

NHS trust: University Hospitals of Derby and Burton NHS Foundation Trust

GenesisCare Birmingham, Nottingham, Oxford

Oncologist



Dr Alison Falconer

Clinical Oncologist
MA, MRCP, FRCR

Special interest: Uro-oncology including prostate and bladder cancer, neuro-oncology, pituitary tumours, MR linac

NHS trust: Imperial College Healthcare NHS Trust

GenesisCare London

Oncologist



Dr James Good

Clinical Oncologist
MSc, PhD, FRCR

Special interest: Colon, head and neck, liver, pancreas, rectum and thyroid. Selective internal radiotherapy (SIRT) for liver tumours, stereotactic ablative radiotherapy (SABR) and MR Linac

NHS trust: University Hospitals Birmingham NHS Foundation Trust

GenesisCare Birmingham, Oxford

Oncologist

Consultants

SABR

Chelmsford

Tel: 0808 301 9889

enquiries@genesiscare.co.uk



Dr Sara Khaksar

Clinical Oncologist

MB BCh, MRCP, FRCR

Special interest: Urology including prostate and bladder cancers, and MR linac

NHS trust: Royal Surrey NHS Foundation Trust

GenesisCare Guildford, London

Oncologist



Dr Alex Martin

Clinical Oncologist

MA, BM BCh, MD, MRCP, FRCR

Special interest: Prostate, bladder, lung, targeted therapies and immunotherapy, stereotactic ablative radiotherapy (SABR) and MR linac

NHS trust: West Suffolk NHS Foundation Trust, Cambridge University Hospitals NHS Foundation Trust

GenesisCare Cambridge, London

Oncologist



Dr Kasia Owczarczyk

Clinical Oncologist

Special interest: Upper and lower gastrointestinal (GI) cancers and MR linac

NHS trust: Guy's and St Thomas' NHS Foundation Trust

GenesisCare London

Oncologist



Dr Sherif Raouf

Clinical Oncologist

MB BCh, FRCR

Special interest: Colon, gynaecological, upper and lower gastrointestinal (GI), lung and MR linac

NHS trust: Barts Health NHS Trust

GenesisCare Chelmsford, London

Oncologist



Dr Sarah Jefferies

Clinical Oncologist

BSc, MB BS, PhD, FRCR, FRCP

Special interest: Stereotactic ablative radiotherapy (SABR)

NHS trust: Cambridge University Hospitals NHS Foundation Trust

GenesisCare Cambridge

Oncologist



Dr Vincent Khoo

Clinical Oncologist

MB BS, MD, FRACR, FRCR

Special interest: Urology including prostate, bladder, kidney, testis and penile cancers, IMRT, IGRT, stereotactic ablative radiotherapy (SABR) and MR linac

NHS trust: The Royal Marsden NHS Foundation Trust

GenesisCare London

Oncologist



Dr Meera Nandhabalan

Clinical Oncologist

MRCP, FRCR, PhD

Special interest: Stereotactic ablative radiotherapy (SABR) and benign and malignant brain tumours

NHS trust: Oxford University Hospitals NHS Foundation Trust

GenesisCare Oxford

Oncologist



Dr Carla Perna

Clinical Oncologist

MD, FRCR (equiv.)

Special interest: Urology including prostate, and MR Linac

NHS trust: Royal Surrey NHS Foundation Trust

GenesisCare Guildford, London, Oxford

Oncologist

Oncologist



Dr Ami Sabharwal

Clinical Oncologist

BSc (Hons), MBBS, MRCP, FRCR, MD

Special interest: Urology and MR Linac

NHS trust: Oxford University Hospitals NHS Foundation Trust

GenesisCare Oxford

Oncologist



Dr Timothy Sevitt

Clinical Oncologist

MA, MB, BChir, MRCP, FRCR

Special interest: Lung and gastrointestinal (GI) cancers, stereotactic ablative radiotherapy (SABR) and MR linac

NHS trust: Maidstone and Tunbridge Wells NHS Trust

GenesisCare Maidstone, London

Oncologist



Dr Amen Sibtain

Clinical Oncologist

MBBS, MRCP, MD, FRCR

Special interest: Upper and lower gastrointestinal (GI) cancers, stereotactic radiosurgery (SRS) and MR linac

NHS trust: N/A

GenesisCare London

Our clinical governance teams oversee the development of the best practice, innovative protocols and clinical evaluation as well as approval of all consultants to practise at our centres

Consultants
SABR

About

Diagnostics

Breast Consultants

Urology Consultants

National services

Neuro-oncology

A - Z Consultants

Chelmsford

Tel: 0808 301 9889

enquiries@genesiscare.co.uk





A new paradigm in radiation oncology

We are the first to introduce MRIdian to the UK. MRIdian combines precision radiotherapy with cutting-edge magnetic resonance (MR) image guidance to precisely locate tumours and significantly improve radiotherapy targeting accuracy. MR imaging allows clinicians to detect subtle anatomical changes between treatments and rapidly reshape dose delivery – all while the patient is in the treatment position.

Benefits of MRIdian

This advanced technology means tumour sites can receive a high dose while sparing more normal tissue. This means reduced side effects of radiotherapy and shorter treatment courses.

The UK's first MRIdian – combining MRI soft tissue visualisation with precision radiotherapy



Available to all GenesisCare patients at our centres in London and Oxford

Real-time planning and adaptation significantly improves targeting accuracy

Reduces side effects and improves outcomes

For prostate, lung, liver, pancreatic and GI cancers

When required, we will help your patients with transport depending on treatment and location. Please enquire for more details.

**Treatment within one week from planning
Better care faster**

List of MRIdian consultants overleaf



MRIdian

Chelmsford

Tel: 0808 301 9889

enquiries@genesiscare.co.uk

GenesisCare

About

Diagnostics

Breast Consultants

Urology Consultants

National services

Neuro-oncology

A - Z Consultants

Consultants

MRIdian

Chelmsford

Tel: 0808 301 9889

enquiries@genesiscare.co.uk



Oncologist



Dr Nicola Anyamene
Clinical Oncologist
MBBS, FRCR, MRCP

Special interest: Urology, upper gastrointestinal (GI), hepatobiliary cancers, stereotactic radiosurgery (SRS) and MR linac
NHS trust: East and North Hertfordshire NHS Trust
GenesisCare London

Oncologist



Dr John Conibear
Clinical Oncologist
MB BCh, BSc, MRCP, MSc, FRCR, MD (Res)

Special interest: Breast and lung oncology, and MR linac
NHS trust: Barts Health NHS Trust
GenesisCare London

Oncologist



Dr Prantik Das
Clinical Oncologist
MBBS, MRCP, FRCR

Special interest: Urological, lung, upper gastrointestinal (GI), neuroendocrine and MR Linac
NHS trust: University Hospitals of Derby and Burton NHS Foundation Trust
GenesisCare Birmingham, Nottingham, Oxford

Oncologist



Dr Alison Falconer
Clinical Oncologist
MA, MRCP, FRCR

Special interest: Uro-oncology including prostate and bladder cancer, neuro-oncology, pituitary tumours, MR linac
NHS trust: Imperial College Healthcare NHS Trust
GenesisCare London

Oncologist



Dr Philip Camilleri
Clinical Oncologist
MD, MRCP, FRCR

Special interest: Urology including prostate, testicular, bladder; stereotactic ablative body radiotherapy (SABR) and MR Linac
NHS trust: Oxford University Hospitals NHS Foundation Trust
GenesisCare Milton Keynes, Oxford

Oncologist



Dr Nicola Dallas
Clinical Oncologist
MBChB, MRCP, FRCR

Special interest: Urology, including prostate, bladder, kidney and testicular, head and neck, thyroid and MR Linac
NHS trust: Royal Berkshire NHS Foundation Trust
GenesisCare Oxford, Windsor

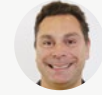
Oncologist



Dr Muthuveni Ezhil
Clinical Oncologist
MBBS, MRCP, FRCR

Special interest: Respiratory motion management and advanced technical radiotherapy, stereotactic ablative radiotherapy (SABR) and MR Linac
NHS trust: Royal Surrey NHS Foundation Trust
GenesisCare Guildford, London, Oxford

Oncologist



Dr Andrew Gaya
Clinical Oncologist
BSc, MB BS, MRCP, FRCR, MD

Special interest: Upper and lower GI and hepatobiliary cancers and MR Linac
NHS trust: Guy's and St Thomas' NHS Foundation Trust
GenesisCare London, Oxford

Consultants

MRIdian

Chelmsford

Tel: 0808 301 9889

enquiries@genesiscare.co.uk



Dr Rafiqul Islam
Clinical Oncologist
MBBS, MRCP, FRCR

Special interest: Colorectal, lung, cancer of unknown primary (CUP) and MR linac

NHS trust: Mid and South Essex NHS Foundation Trust

GenesisCare Chelmsford, London

Oncologist



Dr Vincent Khoo
Clinical Oncologist
MB BS, FRACR, FRCR, MD

Special interest: Urology including prostate, bladder, kidney, testis and penile cancers, IMRT, IGRT, stereotactic ablative radiotherapy (SABR) and MR linac

NHS trust: The Royal Marsden NHS Foundation Trust

GenesisCare London

Oncologist



Dr Kasia Owczarczyk
Clinical Oncologist

Special interest: Upper and lower gastrointestinal (GI) cancers and MR linac

NHS trust: Guy's and St Thomas' NHS Foundation Trust

GenesisCare London

Oncologist



Dr Sherif Raouf
Clinical Oncologist
MB BCh, FRCR

Special interest: Colon, gynaecological, upper and lower gastrointestinal (GI), lung and MR linac

NHS trust: Barts Health NHS Trust

GenesisCare Chelmsford, London

Oncologist



Dr James Good
Clinical Oncologist
MSc, PhD, FRCR

Special interest: Colon, head and neck, liver, pancreas, rectum and thyroid. Selective internal radiotherapy (SIRT) for liver tumours, stereotactic ablative radiotherapy (SABR) and MR Linac

NHS trust: University Hospitals Birmingham NHS Foundation Trust

GenesisCare Birmingham, Oxford

Oncologist



Dr Sara Khaksar
Clinical Oncologist
MB BCh, MRCP, FRCR

Special interest: Urology including prostate and bladder cancers, and MR linac

NHS trust: Royal Surrey NHS Foundation Trust

GenesisCare Guildford, London

Oncologist



Dr Alex Martin
Clinical Oncologist
MA, BM BCh, MD, MRCP, FRCR

Special interest: Prostate, bladder, lung, targeted therapies and immunotherapy, stereotactic ablative radiotherapy (SABR) and MR linac

NHS trust: West Suffolk NHS Foundation Trust, Cambridge University Hospitals NHS Foundation Trust

GenesisCare Cambridge, London

Oncologist



Dr Carla Perna
Clinical Oncologist
MD, FRCR (equiv.)

Special interest: Urology including prostate, and MR Linac

NHS trust: Royal Surrey NHS Foundation Trust

GenesisCare Guildford, London, Oxford

Oncologist

Oncologist



Dr Ami Sabharwal

Clinical Oncologist

BSc (Hons), MBBS, MRCP, FRCR, MD

Special interest: Urology and MR Linac

NHS trust: Oxford University Hospitals NHS Foundation Trust

GenesisCare Oxford

Oncologist



Dr Timothy Sevitt

Clinical Oncologist

MRCP, MB BChir, FRCR

Special interest: Lung and gastrointestinal (GI) cancers, stereotactic ablative radiotherapy (SABR) and MR linac

NHS trust: Maidstone and Tunbridge Wells NHS Trust

GenesisCare Maidstone, London

Oncologist



Dr Amen Sibtain

Clinical Oncologist

MBBS, MRCP, MD, FRCR

Special interest: Upper and lower gastrointestinal (GI) cancers, stereotactic radiosurgery (SRS) and MR linac

NHS trust: N/A

GenesisCare London

Our clinical governance teams oversee the development of the best practice, innovative protocols and clinical evaluation as well as approval of all consultants to practise at our centres

Consultants

MRIdian

Chelmsford

Tel: 0808 301 9889

enquiries@genesiscare.co.uk



About

Diagnostics

Breast Consultants

Urology Consultants

National services

Neuro-oncology

A - Z Consultants



Complete care pathway

Stereotactic radiosurgery (SRS) – non-surgical radiotherapy that delivers precisely-targeted radiation in fewer high-dose treatments than traditional therapy to preserve healthy tissue.

Gamma Knife radiosurgery – provides maximum precision for the most complex and critically located targets in the brain.

3T MRI – powerful MRI modality to enable early detection and close monitoring of brain metastases.

Functional MRI (fMRI) – to locate eloquent brain tissue to guide neurosurgical planning.

Mixed reality viewers – to visualise tumour and treatment options in 3D.

Diffusion tensor imaging – provides assessment of tissue microstructure and we use tractography to provide a 3D visualisation of neural tracts and the brain's connectivity. This provides additional information about the location of important pathways for speech, movement, vision and other behaviours important for patient quality of life.

Precise, brain area-sparing radiation for small brain tumours and functional abnormalities of the brain



Available to all GenesisCare patients at our centres in London and Oxford

A world-class end-to-end service
Specialist eMDT to assess each case and recommend treatment

When required, we will help your patients with transport depending on treatment and location. Please enquire for more details.

Appointments within 48 hours of referral

**Treatment within five days from planning scan
Better care faster**

List of neuro-oncology consultants overleaf



Neuro-oncology

Chelmsford

Tel: 0808 301 9889

enquiries@genesiscare.co.uk

 GenesisCare

About

Diagnostics

Breast Consultants

Urology Consultants

National services

Neuro-oncology

A - Z Consultants

Oncologist



Dr Luis Aznar-Garcia

Clinical Oncologist
MD, PhD, MRCR

Special interest: Brain metastases, hepatobiliary and breast. Stereotactic radiosurgery (SRS) and stereotactic ablative radiotherapy (SABR)

NHS trust: Nottingham University Hospitals NHS Trust

GenesisCare Nottingham

Oncologist



Dr Meera Nandhabalan

Clinical Oncologist
MRCP, FRCR, PhD

Special interest: Stereotactic ablative radiotherapy (SABR) and benign and malignant brain tumours

NHS trust: Oxford University Hospitals NHS Foundation Trust

GenesisCare Oxford

Surgeon



Puneet Plaha

Neurosurgeon
MB BS, MS, FRCS (SN)

Special interest: Brain tumour surgery, minimally invasive endoscopic surgery, awake surgery, meningioma surgery, endoscopic intraventricular surgery, colloid cyst surgery

NHS trust: Oxford University Hospitals NHS Foundation Trust

Practising at: John Radcliffe PPU, Nuffield Health The Manor, The London Clinic

Radiologist



Dr Pieter Pretorius

Neuroradiologist
MBChB MSc (OXON) FRCR

Special interest: Conditions of the CNS, spine, head and neck region, including ENT and orbital conditions

NHS trust: Oxford University Hospitals NHS Foundation Trust

GenesisCare Oxford

Radiologist



Dr Fintan Sheerin

Neuroradiologist
MA, MB, Bchir, MRCP, FRCR

Special interest: Conditions of the CNS, spine, head and neck region

NHS trust: Oxford University Hospitals NHS Foundation Trust

GenesisCare Oxford

Surgeon



Richard Stacey

Neurosurgeon
MB BS, FRCS, FRCS (SN)

Special interest: Full general neurological practice including spinal and intercranial procedures

NHS trust: Oxford University Hospitals NHS Foundation Trust

Practising at: John Radcliffe PPU, Nuffield Health The Manor

Neuroimaging



Dr Natalie Voets

Neuroimaging Scientist
PhD

Special interest: MRI, fMRI, tractography

NHS trust: Oxford University Hospitals NHS Foundation Trust

GenesisCare Oxford

Consultants

Neuro-oncology

About

Diagnostics

Breast
Consultants

Urology
Consultants

National
services

Neuro-
oncology

A - Z
Consultants

Chelmsford

Tel: 0808 301 9889

enquiries@genesiscare.co.uk



Consultants

Chelmsford

Tel: 0808 301 9889

enquiries@genesiscare.co.uk

**Howard Bradpiece****General Surgeon**

MB BCh

Special interest: Benign and malignant breast conditions, one stop and intra-operative sentinel node sampling and reconstructive breast surgery. Hernia surgery and vasectomy

NHS trust: N/A

Practising at: Ramsay The Rivers, The Holly Private Hospital

**Dennis-Wayne Chicken****General Surgeon**

MB ChB, MRCS (Eng), FRCS (Gen Surg)

Special interest: Breast cancer, benign disease, screening, familial breast cancer, breast conservation, reconstruction, assessment of breast lumps, male breast problems, thyroid and parathyroid surgery, gallbladder, hernia, lymph node biopsy, skin lesions

NHS trust: Basildon & Thurrock University Hospitals NHS Foundation Trust

Practising at: Spire Hartwood, Nuffield Health Brentwood

**Sascha Dua****General Surgeon**

MBBS, FRCS, MD

Special interest: Breast reduction, breast reconstruction, oncoplastic breast surgery, early detection of breast cancer, breast cancer prevention, pregnancy-associated breast changes, genetics, family history, breast cysts, breast pain

NHS trust: East and North Hertfordshire NHS Trust

Practising at: Nuffield Health Brentwood, Spire Hartwood

**Emma Gray****General Surgeon**

MB BChir

Special interest: Breast surgery, paediatric general surgery, gallstones and groin hernias

NHS trust: Mid and South Essex NHS Foundation Trust

Practising at: Spire Wellesley

**Miles Banwell****Plastic Surgeon**

MBBS, PhD, FRSC (Plast)

Special interest: Breast reconstruction, cosmetic breast, facial aesthetics, body contouring

NHS trust: Mid Essex Hospital Services NHS Trust

Practising at: The Holly Private Hospital, Spire Hartwood

**Sankaran Chandrasekharan****Breast Surgeon**

MBBS, FRCS

Special interest: Diagnosis and treatment of breast cancer, breast surgery, oncoplastic breast surgery

NHS trust: East Suffolk and North Essex NHS Foundation Trust

Practising at: Ramsay The Oaks, Ramsay Springfield

**Harleen Deol****Breast Surgeon**

MBBS, MRCS, MSc, DipIC, FRCS (Gen Sur)

Special interest: Breast – benign disease, cancer, family history risk management, oncoplastic and reconstructive breast surgery, cosmetic breast surgery

NHS trust: East and North Hertfordshire NHS Trust

Practising at: Spire Harpenden, Pinehill, Ramsay The Rivers, Queen Elizabeth II PPU

**Veronica Grassi****Consultant Oncoplastic Breast Surgeon**

MD, CCT (Gen surg)

Special interest: Malignant and benign breast disease, oncoplastic breast reconstructive surgery

NHS trust: The Princess Alexandra Hospital NHS Trust

Practising at: Ramsay The Rivers, Hospital of St John & St Elizabeth

Breast

Breast

Breast

Breast

Breast

Breast

Breast

Breast

Consultants

Chelmsford

Tel: 0808 301 9889

enquiries@genesiscare.co.uk

Breast

**Wael Ismail**General Surgeon
MB BCh**Special interest:** Breast oncology, hernia surgery, breast surgery**NHS trust:** Barking, Havering & Redbridge University Hospitals NHS Trust**Practising at:** Spire Hartswood

Breast

**Arikoge Ogedegbe**General Surgeon
MD, FRCS (Gen), FRCS (Ed) MBBS**Special interest:** Breast cancer, breast pain, laparoscopy for gallstones and hernia repair. Hernias, lumps and bumps, breast augmentation, breast reduction, paediatric surgery**NHS trust:** Barking, Havering & Redbridge University Hospitals NHS Trust**Practising at:** Nuffield Health Brentwood, Spire Hartswood, Spire London East

Breast

**Akin Ojo**General Surgeon
MB BS**Special interest:** Breast disease, one stop clinic, family history of breast cancer, sentinel node biopsy, breast conservation, mastectomy, thyroid and parathyroid surgery, laparoscopy, gallbladder, hernia, endocrine disease and surgery, skin lesions**NHS trust:** Barking, Havering & Redbridge University Hospitals NHS Trust**Practising at:** Spire Hartswood, Spire London East

Breast

**Antony Pittathankal**General Surgeon
MB BS**Special interest:** Thyroid disorders/surgery, breast disease, parathyroid gland surgery, endocrine surgery, breast reconstruction, oncoplastic breast surgery**NHS trust:** Barking, Havering & Redbridge University Hospitals NHS Trust**Practising at:** Nuffield Health Brentwood, Spire Hartswood, Spire London East

Breast

**Neil Rothnie**General Surgeon
MS (Lond), MB BS, FRCS**Special interest:** Hernias, including inguinal hernia, breast surgery, surgical oncology, breast disease, groin surgery**NHS trust:** Mid and South Essex NHS Foundation Trust**Practising at:** Spire Wellesley

Breast

**Ali Salih**General Surgeon
MS, FRCS, FRCS (Gen and Breast), DipS, MB BCh**Special interest:** Breast surgery, general surgery, oncology**NHS trust:** Basildon & Thurrock University Hospitals NHS Foundation Trust**Practising at:** Nuffield Health Brentwood, Spire Hartswood

Breast

**Simon Smith**Breast and Endocrine Surgeon
MB BS, BSc, MS**Special interest:** Breast and endocrine, oncoplastic breast surgery, reconstruction and cosmetic breast surgery, thyroid surgery, benign thyroid disease, parathyroid surgery, minimally invasive parathyroidectomy for hypercalcaemia**NHS trust:** Mid Essex Hospital Services NHS Trust**Practising at:** Ramsay Springfield

Breast

**Steven Snooks**General Surgeon
MB BS, MD, FRCS, LLB (Hons), Degree of the Utter Bar**Special interest:** Breast disease, breast oncology, breast surgery. Hernias, including inguinal hernia/sports groin injury. Excision of skin lesions**NHS trust:** N/A**Practising at:** Spire London East, The Holly Private Hospital

Consultants

Chelmsford

Tel: 0808 301 9889

enquiries@genesiscare.co.uk



Breast

**Harun Thomas**

Consultant Oncoplastic Breast Surgeon
MBBS, MS (Gen Surg), FRCS, MS (Oncoplastics)

Special interest: Breast lump investigation, breast lump removal, breast reconstruction following mastectomy, sentinel lymph node biopsy and lymph node removal, mastectomy

NHS trust: Mid and South Essex NHS Foundation Trust

Practising at: Spire Wellesley, Nuffield Health Brentwood

Cardiac, respiratory

**Ugo Ekeowa**

Respiratory and General Medicine Physician
PhD, MBBS (Hons), MRCP, BSc (Hons)

Special interest: Lung cancer, asthma, bronchitis, COPD, TB, allergy, emphysema, chest infection, pneumonia, bronchiectasis, interstitial lung disease, sarcoidosis, pulmonary embolus, pneumothorax

NHS trust: The Princess Alexandra Hospital NHS Trust

Practising at: Highgate Private Hospital, Ramsay The Rivers, The Holly Private Hospital

Cardiac, respiratory

**Dipak Mukherjee**

Respiratory Physician
CCST(UK)

Special interest: Lung disease, general respiratory conditions, chronic cough, breathlessness, asthma, TB, COPD, lung cancer, interventional bronchoscopy, EBUS, medical thoracoscopy, pleural disease, endobronchial cryotherapy

NHS trust: Basildon & Thurrock University Hospitals NHS Foundation Trust

Practising at: Spire Hartswood, Nash Basildon

Cardiac, respiratory

**Samir Shah**

Cardiothoracic Surgeon
MBBS

Special interest: Adult cardiac surgery, atrial fibrillation, renovascular disease, lung cancer, minimal access/invasive surgery

NHS trust: Basildon & Thurrock University Hospitals NHS Foundation Trust

Practising at: Nash Basildon

Dermatology

**Kallirroi Tzafetta**

Plastic Surgeon
Mphil, FRCS (Plast)

Special interest: Facial plastic surgery, facial reconstruction, nasal reconstruction, excision of BCC, excision of SCC, local flaps, skin lesions, mole removal, scar revision, excision of hyperhidrosis

NHS trust: Mid Essex Hospital Services NHS Trust

Practising at: Ramsay The Rivers, Ramsay Springfield, Nuffield Health Brentwood

General

**Howard Bradpiece**

General Surgeon
MB BCH

Special interest: Benign and malignant breast conditions, one stop and intra-operative sentinel node sampling and reconstructive breast surgery. Hernia surgery and vasectomy

NHS trust: N/A

Practising at: Ramsay The Rivers, The Holly Private Hospital

General

**Gary Bray**

Gastroenterologist and Hepatologist
MBBS, BSc, MRCP, MD, FRCP RCP, BA

Special interest: Colonoscopy, gastroscopy, capsule endoscopy, flexible sigmoidoscopy, cancer tests

NHS trust: Mid and South Essex NHS Foundation Trust

Practising at: Spire Wellesley

General

**Sankaran Chandrasekharan**

General Surgeon
MBBS, FRCS

Special interest: Diagnosis and treatment of breast cancer, breast surgery, oncoplastic breast surgery

NHS trust: East Suffolk and North Essex NHS Foundation Trust

Practising at: Ramsay The Oaks, Ramsay Springfield

Consultants

Chelmsford

Tel: 0808 301 9889

enquiries@genesiscare.co.uk

General

**Dennis-Wayne Chicken****General Surgeon**

MB ChB, MRCS (Eng), FRCS (Gen Surg)

Special interest: Breast cancer, benign disease, screening, familial breast cancer, breast conservation, reconstruction, assessment of breast lumps, male breast problems, thyroid and parathyroid surgery, gallbladder, hernia, lymph node biopsy, skin lesions

NHS trust: Basildon & Thurrock University Hospitals NHS Foundation Trust

Practising at: Spire Hartswood, Nuffield Health Brentwood

General

**Sascha Dua****General Surgeon**

MBBS, FRCS, MD

Special interest: Breast reduction, breast reconstruction, oncoplastic breast surgery, early detection of breast cancer, breast cancer prevention, pregnancy-associated breast changes, genetics, family history, breast cysts, breast pain

NHS trust: East and North Hertfordshire NHS Trust

Practising at: Nuffield Health Brentwood, Spire Hartswood

General

**Emma Gray****General Surgeon**

MB BChir

Special interest: Breast surgery, paediatric general surgery, gallstones and groin hernias

NHS trust: Mid and South Essex NHS Foundation Trust

Practising at: Spire Wellesley

General

**Wael Ismail****General Surgeon**

MB BCh

Special interest: Breast oncology, hernia surgery, breast surgery

NHS trust: Barking, Havering & Redbridge University Hospitals NHS Trust

Practising at: Spire Hartswood

General

**Arikoge Ogedegbe****General Surgeon**

MD, FRCS (Gen), FRCS (Ed) MBBS

Special interest: Breast cancer, breast pain, laparoscopy for gallstones and hernia repair. Hernias, lumps and bumps, breast augmentation, breast reduction, paediatric surgery

NHS trust: Barking, Havering & Redbridge University Hospitals NHS Trust

Practising at: Nuffield Health Brentwood, Spire Hartswood, Spire London East

General

**Akin Ojo****General Surgeon**

MB BS

Special interest: Breast disease, one stop clinic, family history of breast cancer, sentinel node biopsy, breast conservation, mastectomy, thyroid and parathyroid surgery, laparoscopy, gallbladder, hernia, endocrine disease and surgery, skin lesions

NHS trust: Barking, Havering & Redbridge University Hospitals NHS Trust

Practising at: Spire Hartswood, Spire London East

General

**Antony Pittathankal****General Surgeon**

MB BS

Special interest: Thyroid disorders/surgery, breast disease, parathyroid gland surgery, endocrine surgery, breast reconstruction, oncoplastic breast surgery

NHS trust: Barking, Havering & Redbridge University Hospitals NHS Trust

Practising at: Nuffield Health Brentwood, Spire Hartswood, Spire London East

General

**Neil Rothnie****General Surgeon**

MS (Lond), MB BS, FRCS

Special interest: Hernias, including inguinal hernia, breast surgery, surgical oncology, breast disease, groin surgery

NHS trust: Mid and South Essex NHS Foundation Trust

Practising at: Spire Wellesley

Consultants

Chelmsford

Tel: 0808 301 9889

enquiries@genesiscare.co.uk



General

**Ali Salih****General Surgeon**

MS, FRCS, FRCS (Gen and Breast), DipS, MB BCH

Special interest: Breast surgery, general surgery, oncology**NHS trust:** Basildon & Thurrock University Hospitals NHS Foundation Trust**Practising at:** Nuffield Health Brentwood, Spire Hartswood

General

**Steven Snooks****General Surgeon**

MB BS, MD, FRCS, LLB (Hons), Degree of the Utter Bar

Special interest: Breast disease, breast oncology, breast surgery. Hernias, including inguinal hernia/sports groin injury. Excision of skin lesions**NHS trust:** N/A**Practising at:** Spire London East, The Holly Private Hospital

Gynaecology

**Christopher Spencer****Obstetrician and Gynaecologist**

MB BChir (Camb)

Special interest: Colposcopy, minimal access/invasive surgery, pelvic organ prolapse, gynaecological endocrinology and HRT**NHS trust:** Mid Essex Hospital Services NHS Trust**Practising at:** Ramsay Springfield

Urology

**Andrew Ballaro****Urologist**

BSc (Hons), MBBS, FRCS, MSc (Urol), MD, FRCS (Urol)

Special interest: Urology, kidney stones, ureteric stent problems, laser stone surgery, prostatitis, PSA, prostate MRI and template prostate biopsy, prostate cancer, benign prostate disease**NHS trust:** Barking, Havering & Redbridge University Hospitals NHS Trust**Practising at:** Spire Hartswood, Hospital of St John & St Elizabeth, Spire London East, Nuffield Brentwood, BMI Hendon, Highgate, The Wellington

Urology

**Jayanta Barua****Urologist**

MB ChB, FRCS, FRCS (Urol), MD

Special interest: Urinary tract infection, benign prostate enlargement and cancer, urodynamics, bladder cancer, female urology, urinary incontinence, erectile dysfunction, stone disease**NHS trust:** Barking, Havering & Redbridge University Hospitals NHS Trust**Practising at:** Spire Hartswood, Nuffield Health Brentwood, Spire London East

Urology

**Shiv Bhanot****Urologist**

MS, FRCS

Special interest: Full range of male and female urological treatments**NHS trust:** Barking, Havering & Redbridge University Hospitals NHS Trust**Practising at:** Spire London East, Spire Hartswood, BMI The London Independent, Nuffield Health Brentwood

Urology

**John Corr****Urologist**

MB BCH, BAO, FRCSi, FRCS (Urol)

Special interest: Bladder, vasectomy (including reversal), paediatric urology, fertility/infertility and assisted conception, prostate disease including prostate cancer, urological oncology, kidney disorders**NHS trust:** East Suffolk and North Essex NHS Foundation Trust**Practising at:** Ramsay The Oaks

Urology

**Sandy Gujral****Urologist**

BSc (Hons), FRCS, FRCS (Urol), FEBU

Special interest: Bladder investigations, stress incontinence, prostate surgery, kidney stone removal, vasectomy**NHS trust:** Barking, Havering & Redbridge University Hospitals NHS Trust**Practising at:** Spire Hartswood, Spire London East

Consultants

Chelmsford

Tel: 0808 301 9889

enquiries@genesiscare.co.uk



Urology

**Anand Kelkar**Urologist
MB BS

Special interest: Robotic prostatectomy for prostate cancer, prostate conditions, PSA testing, complex pelvic surgery, kidney and bladder cancer, kidney stone disease, urinary infections

NHS trust: Barking, Havering & Redbridge University Hospitals NHS Trust, University College London Hospitals NHS Foundation Trust

Practising at: Spire Hartswood, Spire London East

Urology

**Henry Lewi**Urologist
BSc, MB Bch, FRCS (Edin)

Special interest: Incontinence (urine/faeces), prostate disease including prostate cancer, urological oncology, reconstructive surgery, pelvic floor surgery, stone disease

NHS trust: N/A

Practising at: Ramsay Springfield

Urology

**Zafar Maan**Urologist
BSc (Hons), MBBS, MRCS, MSc (Urol), FRCS (Urol), MA

Special interest: Endourology, laser prostate, stone surgery, andrology, paediatric urology, urological cancers and general female urology

NHS trust: East Suffolk and North Essex NHS Foundation Trust

Practising at: Ramsay The Oaks

Urology

**William McAllister**Urologist
MA, MS, FRCS (Urol)

Special interest: Benign prostatic enlargement, incontinence, Botox for overactive bladder, prostate cancer, template biopsy, fusion biopsy, raised PSA, urine infections, foreskin problems, vasectomy and reversal, kidney stones, LUTS, urodynamics

NHS trust: Mid Essex Hospital Services NHS Trust

Practising at: Ramsay Springfield

Urology

**Martin Nuttall**Urologist
MA, MD, FRCS (Urol)

Special interest: Urinary infections, haematuria, kidney cancer, stones, prostate cancer, male urinary symptoms, erectile dysfunction, kidney surgery, template and MRI fusion prostate biopsy, Urolift

NHS trust: East Suffolk and North Essex NHS Foundation Trust, Mid Essex Hospital Services NHS Trust

Practising at: Ramsay Springfield

Urology

**Rajiv Pillai**Urologist
MB BS

Special interest: Prostate cancer, all benign prostate disorders, high PSA, blood in urine, kidney stones, men's health, urinary tract infections, bladder cancer, kidney cancer, chronic prostatitis, bladder dysfunction, erectile dysfunction

NHS trust: East Suffolk and North Essex NHS Foundation Trust

Practising at: Ramsay The Oaks

Urology

**Bernard Potluri**Urologist
MBBS, MS, FRCS, Dip (Urol)

Special interest: Urological cancers, prostate cancer, radical prostatectomy, brachytherapy, erectile dysfunction, haematuria assessment, no scalpel vasectomy and vasectomy reversal

NHS trust: N/A

Practising at: Ramsay The Rivers, Nuffield Health Brentwood

Urology

**Ramachandran Ravi**Urologist
FRCS, FRCSEd (Gynae), FRCS (Urol), FEBU, MCh (Urol), MS (Gen Surg), MBBS

Special interest: Renal and ureteric stones, prostate disease including prostate cancer, laser prostatectomy, bladder cancer, laparoscopy, reconstructive surgery, urinary stones, LUTS

NHS trust: Basildon & Thurrock University Hospitals NHS Foundation Trust

Practising at: Nuffield Health Brentwood, Spire Hartswood



Gerald Rix

Urologist

BA (Hons), Bchir, MB, MA (Hons), FRCS (Eng), FRCS (Urol)

Special interest: Laser stone and prostate treatment, urological oncology and general female urology, vasectomy and microsurgical vasectomy reversal

NHS trust: East Suffolk and North Essex NHS Foundation Trust

Practising at: Ramsay The Oaks



Rateb Samman

Urologist

MD, FRCS, MSc (Urol), FRCS (Urol), FEBU, DipUrol

Special interest: Uro-oncology, endo-oncology and female urology

NHS trust: The Princess Alexandra Hospital NHS Trust

Practising at: Ramsay The Rivers, Ramsay Springfield, BMI The London Independent



Ranjan Thilagaraja

Urologist

MS, FRCS (Urol)

Special interest: Prostate, BPH, REZUM steam therapy, Urolift, TURP, Greenlight laser prostatectomy, interstitial cystitis, prostate disease including cancer, kidney stones

NHS trust: The Royal Marsden NHS Foundation Trust

Practising at: Ramsay Springfield



Daniel Swallow

Urologist

MB BChir

Special interest: General urology and urological stone disease

NHS trust: Mid Essex Hospital Services NHS Trust

Practising at: Ramsay Springfield



Jaspal Virdi

Urologist

FRCS (Eng), FRCS (Urol)

Special interest: General urology with special interest in bladder, prostate and testicular cancer, total stone management, BPH, chronic prostatitis and UTIs

NHS trust: The Princess Alexandra Hospital NHS Trust

Practising at: Ramsay The Rivers, The Holly Private Hospital

We work with recognised local surgeons and design personalised treatment plans for each patient

Chelmsford

Tel: 0808 301 9889

enquiries@genesiscare.co.uk

	Benign	Bone and soft tissue	Breast	Colorectal and gastric	Dermatology	Gynaecology	Haematology	Head and neck	Hepatobiliary	Lung	Neurology	Urology	SABR
Dr Imtiaz Ahmed							●				●		
Dr Hafiz Algurafi		●		●	●								
Dr Abby Cyriac			●		●							●	
Dr Venkatesh Gajapathy			●					●					
Dr Stephanie Gibbs		●	●									●	
Dr Abdel Hamid		●			●		●					●	
Dr Rafiqul Islam			●							●			●
Dr Mukesh Mukesh		●		●		●							
Dr Dakshinamoorthy Muthukumar									●			●	
Dr Sherif Raouf			●		●				●				●
Dr Richard Shaffer	●			●							●	●	
Dr Eliot Sims		●									●		
Dr Julian Singer			●							●			
Dr Sunil Skaria			●	●	●				●	●			
Dr David Tsang				●					●			●	

● Specialty

Oncologists

Index

Chelmsford

Tel: 0808 301 9889

enquiries@genesiscare.co.uk



About

Diagnostics

Breast
Consultants

Urology
Consultants

National
services

Neuro-
oncology

A - Z
Consultants

Oncologists

Oncologist



Dr Imtiaz Ahmed

Clinical Oncologist
MBBS, MRCP, FRCR

Special interest: Urological, head and neck

NHS trust: Mid and South Essex NHS Foundation Trust

GenesisCare Chelmsford

Oncologist



Dr Hafiz Algurafi

Clinical Oncologist
MB BCh, BAO (NUI), LRCP & SI, MRCP, FFR RCSI, FRCR

Special interest: Breast, gynaecological and skin

NHS trust: Mid and South Essex NHS Foundation Trust

GenesisCare Chelmsford

Oncologist



Dr Abby Cyriac

Clinical Oncologist
MBBS, FRCR

Special interest: Gynaecological, upper gastrointestinal (GI) and urological

NHS trust: Mid and South Essex NHS Foundation Trust

GenesisCare Chelmsford

Oncologist



Dr Venkatesh Gajopathy

Clinical Oncologist
MBBS, MRCP, FRCR, Dip (Onc)

Special interest: Upper and lower gastrointestinal (GI) cancers, hepato pancreatic biliary (HPB) and pancreatic cancers, and cancers of unknown primary (CUP)

NHS trust: The Princess Alexandra Hospital NHS Trust

GenesisCare Chelmsford

Oncologist



Dr Stephanie Gibbs

Clinical Oncologist
MBBS, MRCP, FRCR

Special interest: Colorectal, urological, including bladder and prostate, and breast

NHS trust: N/A

GenesisCare Chelmsford

Oncologist



Dr Abdel Hamid

Clinical Oncologist
MB BCh, MSc, FRCR

Special interest: Urological, breast, head and neck, and gynaecological

NHS trust: Colchester Hospital University NHS Foundation Trust

GenesisCare Chelmsford

Oncologist



Dr Rafiqul Islam

Clinical Oncologist
MBBS, MRCP, FRCR

Special interest: Colorectal, lung, cancer of unknown primary (CUP) and MR linac

NHS trust: Mid and South Essex NHS Foundation Trust

GenesisCare Chelmsford, London

Oncologist



Dr Mukesh Mukesh

Clinical Oncologist
MBBS, MRCP, FRCR, MSc (Onc)

Special interest: Breast, haematological, skin, including metastatic melanoma, and immunotherapy

NHS trust: Colchester Hospital University NHS Foundation Trust

GenesisCare Chelmsford, Cambridge

Chelmsford

Tel: 0808 301 9889

enquiries@genesiscare.co.uk

 **GenesisCare**

Oncologists

Chelmsford

Tel: 0808 301 9889

enquiries@genesiscare.co.uk



Oncologist



Dr Dakshinamoorthy Muthukumar

Clinical Oncologist
MD, MSc, MRCP, FRCR

Special interest: Thoracic, lung and urological, including prostate, bladder and kidney

NHS trust: Colchester Hospital University NHS Foundation Trust, East Suffolk and North Essex NHS Foundation Trust

GenesisCare Chelmsford

Oncologist



Dr Sherif Raouf

Clinical Oncologist
MB BCh, FRCR

Special interest: Colon, gynaecological, upper and lower gastrointestinal (GI), lung and MR linac

NHS trust: Barts Health NHS Trust

GenesisCare Chelmsford, London

Oncologist



Dr Richard Shaffer

Clinical Oncologist
BSc, MBBS, MRCP, FRCR

Special interest: Prostate, bladder, brain, skin. Benign disease – Dupuytren's, Ledderhose, plantar fasciitis and Achilles tendonitis

NHS trust: N/A

GenesisCare Birmingham, Chelmsford, Elstree, Guildford, Maidstone, Milton Keynes, Nottingham, Oxford, Portsmouth, Southampton, Windsor

Oncologist



Dr Eliot Sims

Clinical Oncologist
MA, MD, MRCP, FRCR

Special interest: Breast and brain

NHS trust: Barking, Havering & Redbridge University Hospitals NHS Trust

GenesisCare Chelmsford

Oncologist



Dr Julian Singer

Clinical Oncologist
MB BS, MRCP, FRCR

Special interest: Breast, lung, biological and hormone therapy

NHS trust: The Princess Alexandra Hospital NHS Trust

GenesisCare Chelmsford

Oncologist



Dr Sunil Skaria

Clinical Oncologist
MSc, MRCP (UK), MRCP (Ireland), FRCR

Special interest: Breast, lung, skin, thoracic, upper gastrointestinal (GI), hepatobiliary, neuroendocrine tumours, and sarcomas

NHS trust: Mid Essex Hospital Services NHS Trust, East Suffolk and North Essex NHS Foundation Trust

GenesisCare Chelmsford

Oncologist



Dr David Tsang

Clinical Oncologist
MBBS, MRCP, FRCR, MPhil (Medical Law)

Special interest: Cholangiocarcinoma, upper gastrointestinal (GI), urological including prostate and bladder, pancreatic and colorectal cancer

NHS trust: Mid and South Essex NHS Foundation Trust, Basildon and Thurrock University Hospitals NHS Foundation Trust

GenesisCare Chelmsford

[genescare.com](https://www.genescare.com)

© GenesisCare 2021. All rights reserved.
GenesisCare is a trading name
of Genesis Cancer Care UK Limited.
003.04D_V1_06.2024

