



GenesisCare Foundation

Inaugural Impact Report



ABOUT THIS REPORT

The GenesisCare Foundation Impact Report profiles our ongoing commitment to the people we care about most, the communities in which we serve and the environments in which we operate.

When we launched the GenesisCare Foundation in 2020, our objective was to further enhance the GenesisCare mission of focusing on the individual to ensure the best life outcomes possible.

Aspiring globally and executing locally, this report covers our first year as a developing philanthropic body aiming to maximise impact in everything we do.

We dedicate this report to the more than 400,000 patients treated by GenesisCare every year, its people and the supporters of our GenesisCare family.

“
**Today's best can
always be better.**”

Contents

Welcome	4
FY21 in review – cancer and cardiac disease didn't stop and neither did we	5
Leveraging GenesisCare's global expertise, resources and network	6
Striving for life changing improvements in cancer and cardiac care	8
Operating with a global perspective	8
Our priority areas and how we measure impact	9
Program in profile – COVID-19 response program	11
Liza's story – never just a number	12
Best possible life outcomes through applied and innovative research	13
Program in profile – Theranostics	14
Terry's story – creating pathways to delivering care	15
Innovation enabling global impact	16
GenesisCare – partnering inside and out	18
Become part of the GenesisCare Foundation ecosystem	19
Corporate governance	20
Board of Directors	22





Welcome

Finding a better way is in our DNA at GenesisCare.

That equates to the best technology available for our cancer and cardiac care patients, investing in our people and their research that aims to improve patient outcomes and, above all, ensuring we provide the highest quality of care and compassionate access services for our patients and their families.

The GenesisCare Foundation is a significant part of this DNA. We established it so we could further the principal mission of our business: access to the best treatment, partnerships and alliances that fuel ideas and research possibilities, and uncompromising care for our patients, irrespective of financial circumstances.

While the GenesisCare Foundation is still young in years, our dreams are big. Every initiative we devise or fund has a global ambition to provide a better quality of life to our more than 400,000 patients treated annually, as well as the communities in which we proudly serve and operate in.

Our now substantial footprint provides even more opportunities to harness technology, think differently by applying artificial intelligence, and collaborating with the leading, and emerging, science and academic institutions to do something different – something world leading.

Through our Foundation, we're building an ecosystem of partners, funders, policy-makers and collaborators that has but one mission – the best possible life outcomes. We won't stop pursuing this mission until we deliver it.

I thank everyone who has contributed to the Foundation's achievements. I have no doubt through our excellent people, strong collaborations, lashings of innovation and "bravery to have a go" we will achieve all we set out to do.

We can do more together than apart, and I look forward to continuing this journey with you.



Dan Collins

**Chair, GenesisCare Foundation
Founder and CEO, GenesisCare**



FY21 in review – cancer and cardiac disease didn't stop and neither did we

In a year of restrictions and physical isolation, we kept treatment accessible and patients connected through the rapid introduction of our COVID-19 response program. We continued to seek out global partnerships, despite

world-wide lockdowns. Believing in treating the individual, and not the condition, we launched programs that will see world-class treatment accessible to those who need it most, despite their geographic or financial situation.

GenesisCare Foundation signature programs

PATIENT ACCESS AND CARE

 **4,500+**

In 2020, we concluded a program that supported **4,500+** patients holistically through their cancer treatment journey with funding provided by GenesisCare Foundation to establish a **Cancer Care Coordinator program**.

 **115+**

patients were provided economic relief via the Foundation's **COVID-19 response program**.

This includes care coordination, transport to-and-from treatment facilities and out-of-pocket expenses ensuring care is never compromised.



Supported by industry partners, GenesisCare Foundation funded an innovative **Prostate Cancer Spacing Program** which is providing world-class care to more than

250 uninsured public patients with complex, life-threatening prostate cancer.

RESEARCH AND INNOVATION



University of Oxford Partnership

saw GenesisCare Foundation play a key role in creating the first UK collaboration of private, academic and charitable sectors for a **Compassionate Access Program** aiming to treat up to **75** patients impacted by **Pancreatic Cancer**.



Launch of **Theranostics Compassionate Access Program**

A revolutionary and innovative nuclear medicine program which is aiming to enable up to **100** patients with metastatic cancers to be subsidised.



Leveraging GenesisCare's global expertise, resources and network

About GenesisCare Foundation

GenesisCare Foundation is an independent, health-promotion charity born from the philanthropic vision, values and commitment of GenesisCare.

At its core, the Foundation aims to provide the best possible health outcomes for patients by funding access to quality care, and investing in research and innovation to enable the best possible life outcomes.

As a nimble and developing philanthropic body, our ambitions for the future are far more aspirational. By working in partnership with others who dare to dream on a global scale, we aim to be the cornerstone leader and investor in new solutions that positively change care plans and accelerate new technology to market for this generation.

Through the visionary support of the GenesisCare family, we will achieve impactful transformation.

About GenesisCare

GenesisCare is an internationally renowned healthcare provider, engaging 6,000 professionals across four countries, specialising in cancer and cardiac care.



Seeing care differently

We believe care should be focused on the individual, not the condition. We believe care should be available when and where it's needed most and should be designed to help give the best life outcomes possible. This is our vision for care.



Global care

Across the world, we have more than 440 centres to help every patient get the right care. For cancer treatment, that includes 14 centres in the UK, 21 in Spain, 36 in Australia and 300 in the U.S. We offer cardiology services at more than 80 locations across Australia. Every year our team sees more than 400,000 people globally.



...funding access to
quality care, and
investing in research
and innovation
to enable the
**best possible
life outcomes.**



Designing better care

Our purpose is to design care experiences that get the best possible life outcomes. We give high-quality care that's available where and when it's needed and is tailored to each patient's particular needs. We give care that helps our patients get on with their life and do things that are important to them. We do this by approaching care like nobody else.

Everything we do is designed in partnership all the way through the entire care process. That means working with everyone from our clinicians to our technicians, from our internal teams to patients. Because, by working together, we stand a better chance of getting more complete health outcomes.

Combined clinical network of GenesisCare

A global network with 443k patient treatments p.a.



● Radiation oncology treatment centers (incl. Landmark) – some also include medical oncology

● Additional oncology offices, offering integrated cancer care services

● Cardiology locations

Cancer treatment centres and medical offices

350+ clinics
Including ~200
radiotherapy treatment centers

Cardiac care locations

80+ clinics and
20 visiting clinics

Countries

4
U.S., Australia, the U.K, Spain

Teams

6,000+
Physicians and staff

Patients

440,000+
patient treatments p.a.

Patients

150+ clinical trials





Striving for life changing improvements in cancer and cardiac care

As a Foundation, our mission is to seek out and support life-changing improvements in cancer and cardiac care, in order to create profound impact at scale for both individuals and communities.

We look to the future by investing in research that has the power to radically improve patient outcomes and rolling out innovative therapies at scale.

We recognise research is a long-term game, but also follow the GenesisCare spirit – we use funds efficiently to get rapid research happening and deliver results to patients; we get things done, quickly.



Operating with a global perspective

We are bold and have the power to collaborate globally to achieve our goals.

Our relationship with GenesisCare gives us learnings from, and connection into, more than 400 hubs around the world.

We also partner and collaborate with community organisations, advocacy groups, governments, corporations, and world leading research organisations with the aim of creating long-lasting, impactful partnerships for the public benefit. We bring new treatments to life and scale access to them.

Our goal is to create a world where everyone who needs cancer and cardiac care lives better for longer.



...we use funds efficiently to get rapid research happening and deliver results to patients...





Our priority areas and how we measure impact

OUR MISSION

Our mission is to seek out and support life-changing improvements in cancer and cardiac care, in order to create profound impact at scale for both individuals and communities.

We do this by:



**FOCUSING ON
TRANSFORMATIVE
POSITIVE OUTCOMES**



**FOSTERING
INNOVATION AND
RESEARCH**



**OPERATING
WITH A GLOBAL
PERSPECTIVE**



PRIORITY AREAS



PATIENT ACCESS



CLINICAL ACCESS

Treatment is at the core of all that we do, along with a belief that everyone should have access to the best possible treatments available, when and where they need it most.

IMPACT MEASUREMENTS



**Designing
trials and
investing in
innovative
research**



**Enabling
access to
new therapies
at scale**



**Focusing
on areas
of unmet
need**



**Providing
comprehensive
support to
patients**



**Tapping
into a
global
network**



**Collaborating
with leading
partners**

GENESISCARE VALUES



**EMPATHY
FOR ALL**



**INNOVATION
EVERY DAY**



**PARTNERSHIP
INSIDE AND OUT**



**BRAVERY TO
HAVE A GO**



**INTEGRITY
ALWAYS**

For every **\$1 invested** by the GenesisCare Foundation,

\$7 of care delivery

and access was enabled through the GenesisCare business, industry and healthcare providers, and other supporting funding sources.

**Impact assessment has been analysed, and is derived from, programs in which the GenesisCare Foundation has contributed to over the past two years on an averaged basis, and with consideration to the amount of additional funding leveraged and provided, as well as patient access to service that would otherwise not be possible for program beneficiaries.*





Program in profile

COVID-19 Response Program – Ensuring the treatment of GenesisCare patients is never compromised

- The impact** More than 100 patients funded and supported to continue, their radiotherapy treatment during the height of the global pandemic.
From travel, to accommodation to psychosocial support, the GenesisCare Foundation enabled safety and surety for our most vulnerable patients, in a most extraordinary period.
- The gap we are responding to** Due to the heightened risk of COVID-19 in immunocompromised individuals, cancer patients were encouraged to avoid public transport. We recognised that impacted up to 500 patient families – the factors including parking costs, access to therapy, wellbeing support and wrap-around care.
To reduce stress and the financial burden around these factors, we built a program to ensure anyone needing support to allow access to their therapy – could and would have it.
- What we know** Receiving a cancer diagnosis and undergoing treatment during COVID-19 adds an extra layer of anxiety. In addition, financial pressures, lock-downs, reduced working hours and family pressures can all heavily impact on the mental wellbeing of patients.
- What we did** Through the support of our business, our staff and our generous supporters, our COVID-19 response program ensured anyone needing support to continue their therapy, irrespective of geographical location or circumstances, had access to their treatment.
Throughout Australia, the majority of our patients undergoing radiotherapy for their cancer, continued their treatment aiding their recovery and enhancing life outcomes.
- Our aspiration** To enable every GenesisCare patient the right to access and the right to support, regardless of financial circumstances, to ensure the best possible life outcomes.
Thorough evaluation of this program showcased not only its success but the continual need for cancer patients to have practical support upon diagnosis and treatment; pandemic or no pandemic.
We are designing a Support Access Program which will not only fund travel costs and accommodation but childcare and greater psychosocial support. Our blue-sky aspiration being specialists in every facility for enhanced recovery and wellbeing support.



Liza's story – never just a number

Liza is a breast cancer patient and mother of three whose income, from a family restaurant, was severely impacted during COVID-19. This burden significantly increased her anxiety during treatment. Getting support through the program was crucial to improving her mental and physical experience.

**Liza, Beneficiary of the COVID-19
response program**

The program still makes me tear up a bit... it helped me so much. I was travelling for radiotherapy every day and it helped so much that somebody else thought that I would need that help. It also helped me emotionally that, even though I couldn't have loved ones there, staff were really thinking of me, as a person, **not a number.**








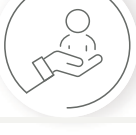

Best possible life outcomes through applied and innovative research

Like our parent-business, the GenesisCare Foundation places significant emphasis on both industry-sponsored and investigator-initiated research across all aspects of our core business – radiation oncology, medical oncology, theranostics, skin and benign tumours.

Consistent with our mission, we're committed to funding any research that improves today's health outcomes for our patients and all their tomorrow's quality of life.

Below is a table of all GenesisCare research. As GenesisCare Foundation is committed to funding world leading research, our aim is to partner with GenesisCare to undertake more research together.

GENESISCARE'S ANNUAL RESEARCH IN NUMBERS

	Oncology Australia	Oncology Globally
 Active clinical trials	68	117
 Non-trial research projects	8	21
 Leading cancer types in our trials	Prostate, breast, or skin cancer	GU, breast, or lung cancer
 Total ongoing patients in trials	1076	1718
 Number of sites and investigators actively conducting trials	33 sites 39 principal investigators 40 dedicated research staff	62 sites 58 principal investigators 60 dedicated research staff



Program in profile

Theranostics – an innovative step towards personalised medicine for patients with metastatic and other rare cancers

Compassionate access program

- The impact** Funding, on a compassionate access basis, aiming to enable up to 100 patients to receive innovative, potentially life-saving therapies for metastatic prostate cancer and other rare cancers.
- The gap we are responding to**

Prostate cancer remains the most commonly diagnosed cancer in men in Australia and is the second most common cause of male cancer death in Australia after lung cancer. More men now die from prostate cancer than women die from breast cancer. In 2020, close to 17,000 new cases of prostate cancer were estimated to be diagnosed, with over 3,000 men dying from the disease.

Rare cancers are defined as ones which have fewer than 6 diagnoses per 100,000 of the population. Over the years, although there's been dramatic reductions in mortality for common cancers due to early diagnoses and improved treatments, this trend has not been seen in rare cancers. A contributing factor for this is treatment availability.
- What we know**

Theranostics treatment can provide great outcomes for patients who have failed other therapies. A combination of nuclear and highly-targeted precision medicine, our data shows around 60% of patients with end stage disease have improvements in Progression Free Survival and Overall Survival.

Unfortunately, Theranostics treatment is currently not reimbursed by the government and, therefore, expensive, with few funding support mechanisms in place.

Theranostics often requires patients to undergo 3–4 cycles of treatment to get their disease under control. The cost of this is prohibitive to many with an estimated 500 – 1,000 patients across Australia getting no treatment.

While waiting for results of overseas trials to be able to access these potential life enhancing treatments many patients will succumb to their disease knowing an effective, well tolerated but cost-prohibitive therapy is available.
- What we did** Backing the belief of our clinical team, we funded a program to enable patients, where no alternative options exist, a treatment that promotes hope, and potentially provides a better quality of life.
- Our aspiration**

For Theranostics to become an evidence-based, subsidised and standard treatment option for men impacted by advanced prostate cancer, as well as patients with rare cancers, where no other treatment regimes are working.

By capturing patient clinical data in a real world setting for publication, and with the goal of regulatory approval, we believe our efforts will lead to the validation of a new treatment regime for these insidious diseases.

Terry's story – creating pathways to delivering care

Terry was referred onto the Theranostics Compassionate Access program after his sarcoma cancer with metastatic disease flared up aggressively for a second time. With rare and recurring cancers like sarcoma there are very few options left, and after having undergone surgery and radiotherapy, his treating Doctor knew that Theranostics was Terry's best chance of life extension.

Due to the high cost of Theranostics treatment, the Compassionate Access program was the only way for Terry to access this treatment.

Terry, Beneficiary of the Theranostics Compassionate Access Program

When my cancer returned, having completed all traditional treatment, we were desperate to find another option. My wife had heard about Theranostics while attending a talk by Dr Nat Lenzo at a GenesisCare seminar. As there was no trial running for my particular cancer, treatment, costs were high and not covered by Medicare or personal health insurance.

When the GenesisCare Foundation generously assisted us on recommendation by my Doctor and the Theranostics team, it was a great relief and much appreciated, as in order to have the time to help me attend my various medical commitments, my wife has reduced her working hours, which has impacted our income.

Having some of the financial burden taken care of by the GenesisCare Foundation helped us enormously, both financially and mentally. We would like to thank the GenesisCare Foundation for supporting us through these challenging times.





Innovation enabling global impact

The GenesisCare Foundation is about partnering with the right organisations - locally and globally – to achieve maximum impact from the funding we generate and provide.

Every funding drive we undertake, every grant allocation, and every new project pilot, is done with (and through) partners with a view to scaling our initiatives to achieve maximum life outcomes for patients in our markets and across the world.

1 Technology access regardless of circumstances

Ground breaking technology should be accessible to all. When a treatment is cost prohibitive GenesisCare Foundation will strive to ensure programs are available for patients to receive the best possible care outcomes available. Our compassionate access programs, subsidise treatments for hard to treat and rare cancers; breaking down barriers, providing hope and promoting equity for all.

2 No geographical boundaries

Transport access, Telehealth and Partner collaborations are a funding focus of the Foundation to help ensure geographical boundaries aren't a barrier to treatment regimes and the very best care. Our upcoming Indigenous Cardiology Access Program is a leading example of a pilot program designed for scale, and for the delivery of integrated care and telecare programs for the most at-risk populations, and in the most remote parts of Australia.

Just moving the needle through more comprehensive consultations could improve life expectancy for at-risk populations by up to five years.

3 Working with government to introduce alternative treatment options

Through the use of our leading-edge technology and continued investment in novel research therapies, we place a strong emphasis on working with Governments across all jurisdictions to demonstrate new treatment regimes for the most complex of cancers. By directing funding to new concepts, innovations and research trials, we proudly provide an evidence-base in which Governments can make an informed decision on new treatment protocols and therapies that obtain the best possible life outcomes.

4 Home-grown research scaled globally

Continuing to couple the scientific rigour and intellectual firepower of our partners, with GenesisCare's global insight and access to care, we will continue to develop treatments that tackle hard-to-treat cancers and metastatic cancers. Building esteemed partnerships, like that with the University of Oxford driving research on pancreatic cancer, we will leverage clinical outcomes of these collaborations to scale technology globally, transforming care for patients and ensuring best-possible life outcomes.





GenesisCare – partnering inside and out

While we have established the GenesisCare Foundation to concentrate our philanthropic focus areas, GenesisCare has long been a supporter, advocate and partner of many aligned for-purpose organisations, which will continue. Across the mainland states, a quick snapshot showcases some of the ways GenesisCare, its Centres and employees actively engage with their communities.

NSW

- Cancer Council initiatives including Australia's Biggest Morning Tea, Daffodil Day Appeal, Sutherland Shire's Relay for Life and Stars of Newcastle
- Breast, Ovarian and Prostate Cancer Awareness
- Support of Mark Hughes Foundation including Beanies for Brain Cancer, Fight Cancer Foundation's Footy Colours for Kids Cancer, and Children's Medical Research Institute's Jeans for Genes Day
- Head and Neck Cancer Video Series with Julie McCrossin
- Dry July with The Kinghorn Cancer Wellness Centre
- Prostate Men's Health Ball at St Vincent's
- The Gutsy Challenge Walk for The GI Cancer Institute

SA

- Cancer Council Bus and other initiatives such as Daffodil Day
- St Andrew's Hospital Foundation, most recently purchasing Breast Operating equipment
- Regular donations to Prostate Cancer Foundation of Australia
- Donation for research by South Australian Prostate Cancer Clinical Outcome Collaborative and Masonic Men's Health Foundation as well as donation to Mary Potter Hospice
- Support the Dreamin Foundation, Flinders Foundation Head and Neck Cancer Ball, AMA SA Annual Gala and Adelaide Survivors Abreast Dragon Boat and some team activities
- Smaller donations to support GenesisCare staff participation to support charities including fun runs for bowel cancer

WA

- Sponsorship of Mandurah City FC State League Women's Team in the Peel region, including GenesisCare Stadium
- Solaris Cancer Care's, Red Sky ride
- AMA MedCon Conference and Gala Ball
- Sponsorship of Palliative Care annual breakfast
- Partnership with Cancer Council provides space at GenesisCare premises for meetings and workshops. In return, Cancer Council provides a concierge service for GenesisCare patients with three Cancer Council volunteers at GenesisCare sites.
- Big Aussie BBQ for Prostate Cancer Foundation of Australia
- Supporting Breast Interest Nurses Group of WA Inc (BINGWA) chair, meeting space and catering
- GenesisCare Courtesy Bus transports patients to treatments
- Sponsorship of local events

QLD and VIC

- Partner with Live Life Get Active to provide camps in:
 - Rockhampton, Bundaberg, Harvey Bay, Maryborough, Frankston, Albury and Shepparton
- Shepparton – Work closely with the Aboriginal and Torres Strait Islander community to hold a NAIDOC session in July, inviting local speakers. Partnering to co-develop a welcome plaque for the Centre
- Support of Cancer Council's Pink Ribbon, Australia's Biggest Morning Tea and Daffodil Day
- Support the McGrath Foundation, Head and Neck Cancer Day, Movember and Children's Medical Institute's, Jeans for Genes Day
- In QLD, GenesisCare Courtesy Bus transports patients to treatments
- Support and sponsorship of local events



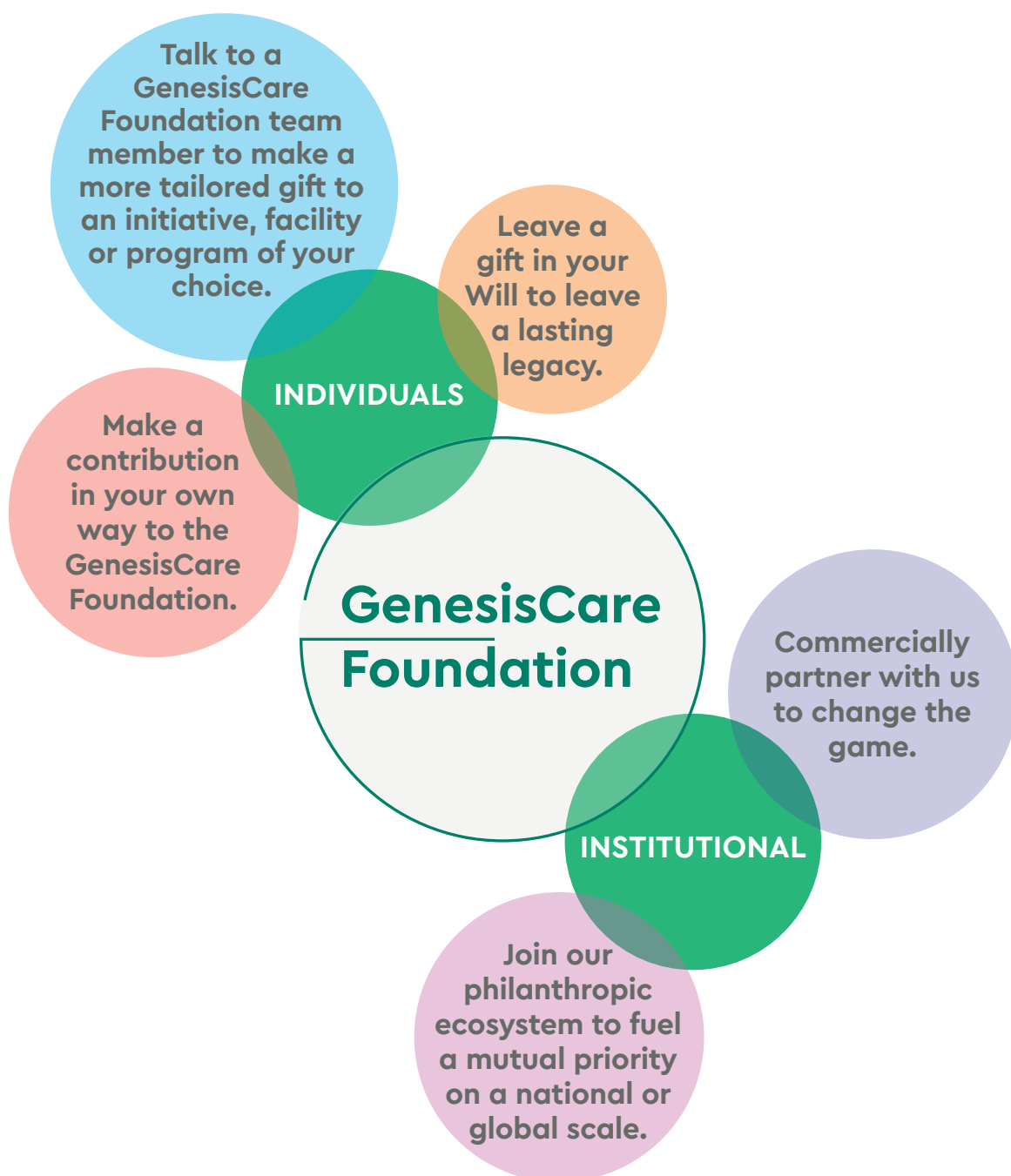
Become part of the GenesisCare Foundation ecosystem

1+1=3 Together, we can be more

Like the GenesisCare business, which has been built on, and now thrives, through partnerships, the GenesisCare Foundation is building an ecosystem of partners.

From grateful patients, to our most admired industry partners and for-purpose foundations, we aim to simply be better – be it more technology to world-markets, transforming care for all patients and ensuring the best possible life outcomes.

Contact: info@genesiscarefoundation.org





Corporate governance

The GenesisCare Foundation is an independent charity registered with the Australian Charities and Not-for-Profit Commission (ACNC) and also as a Deductible Gift Recipient (DGR) with the Australian Taxation Office.

How we operate: a natural alignment to a noble purpose

Strong leadership



Governed by a Board of Directors made up of leaders in their respective fields, who are fundraising or facilitating major projects.

In partnership



Identifying like-minded individuals, institutions and corporates to partner with us on funding change-making projects.

Clear purpose



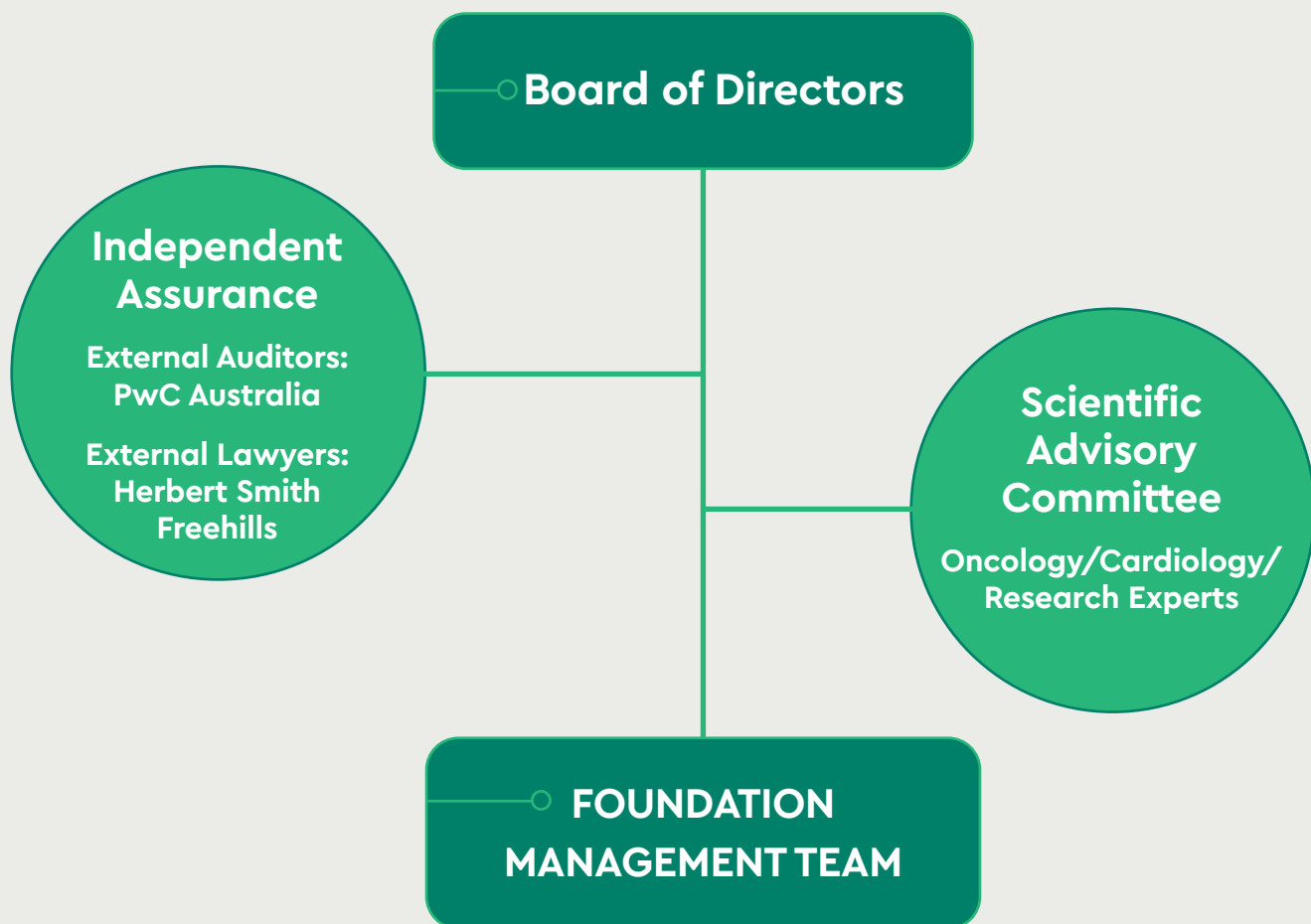
In addition to strict federal and state regulations, we are ruled by a tailored Constitution and Charter. We have built a robust reporting and audit system, in order to ensure we remain charitable in purpose and for the public benefit.

Within the GenesisCare network



Access to corporate resources allows us to keep operating and administrative costs down and focus efforts entirely on programs – whilst reaching a wide range of advocates amongst GenesisCare staff.







Board of Directors



Dan Collins

BCom/BEcon (UQ)

Director since: December 2017

Dan is the Chair of the GenesisCare Foundation and the founder and Chief Executive Officer of GenesisCare.

Under Dan's leadership, GenesisCare has grown from a single clinic to become a leading international healthcare provider for people with cancer or cardiac disease.

His vision for the Foundation is to partner with organisations, not-for-profits and the wider health sector to improve outcomes for patients. Dan believes we can achieve more together than apart.



Gillian Lamoury

A/Prof (USYD), BMED (UON), FRANZCR

Director since: August 2019

Gillian is a Radiation Oncologist with a sub-specialty interest in breast cancer. She is a senior specialist at the Northern Sydney Cancer Centre and has an Academic appointment with the University of Sydney.

Gillian is a member of the Australasian Society of Breast Disease, of the Breast Cancer Trials Group, and a board member of the Strategic Advisory Group for Breast Cancer Network Australia, as well as recent past Chair of the Breast Cancer Advisory Group: Cancer Australia (2018–2020).

Gillian is passionate about patient-centred care and the delivery of high-quality treatments through state-of-the-art and innovative radiotherapy techniques.



Nicholas Lipscombe B.Bus (UTS),
DipFinPlan; RG146, L.R.E.A NSWREI
Director since: August 2019

Nicholas has 20 years' experience in international banking, property, financial markets and family office services.

Working across multiple continents, his clients have included global Fortune 500 companies, international banks, local corporations, governments and private families with multiple country and jurisdiction presence.

Nicholas brings key strengths to the Board in terms of strategy-setting, marketing, governance and due diligence. He sits on various Boards and has extensive expertise in helping foundations grow in perpetuity.



Sophie Ryan
BA/LLB (Hons, 1st class) (ANU)
Director since: April 2020

Sophie is currently the CEO of the Sony Foundation, previously having worked as a lawyer for Allens and overseas, for the United Nations.

Sophie believes business and philanthropy should be inextricably linked and appreciates the value of collaboration when generating real change.

Sophie was recently awarded the 'Young Leader' in the AFR and Westpac's 100 Women of Influence Awards.



GenesisCare Foundation

ABN 80 616 530 879

Building 1, The Mill

41-43 Bourke Road, Alexandria NSW 2015

info@genesiscarefoundation.org

www.genesiscarefoundation.org

